

amy butler's
little stitches for little ones

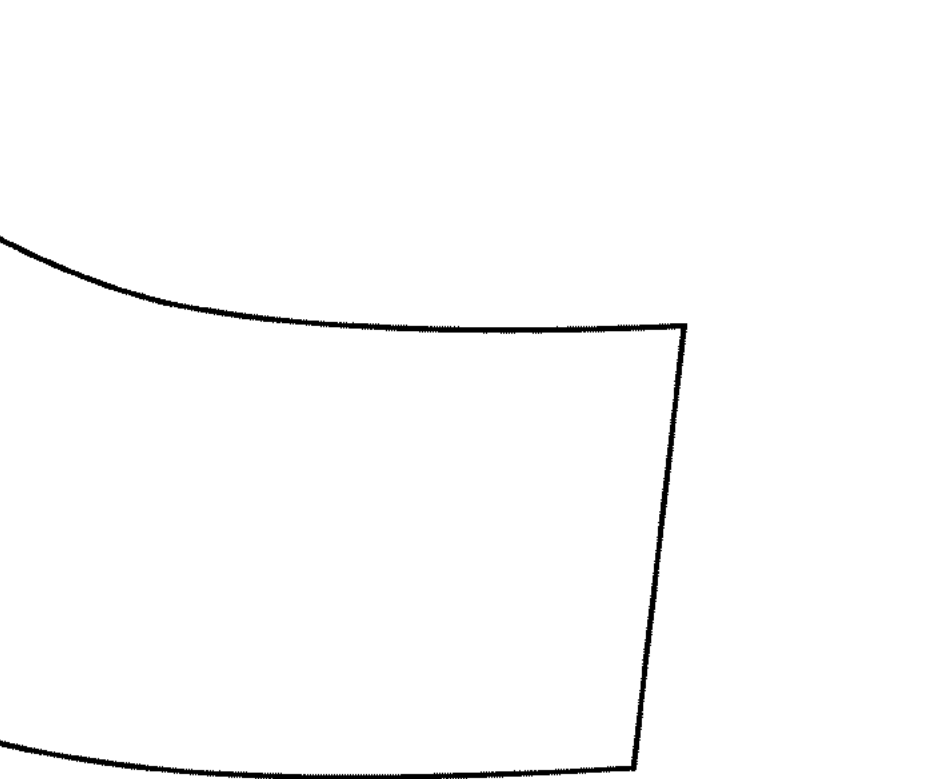
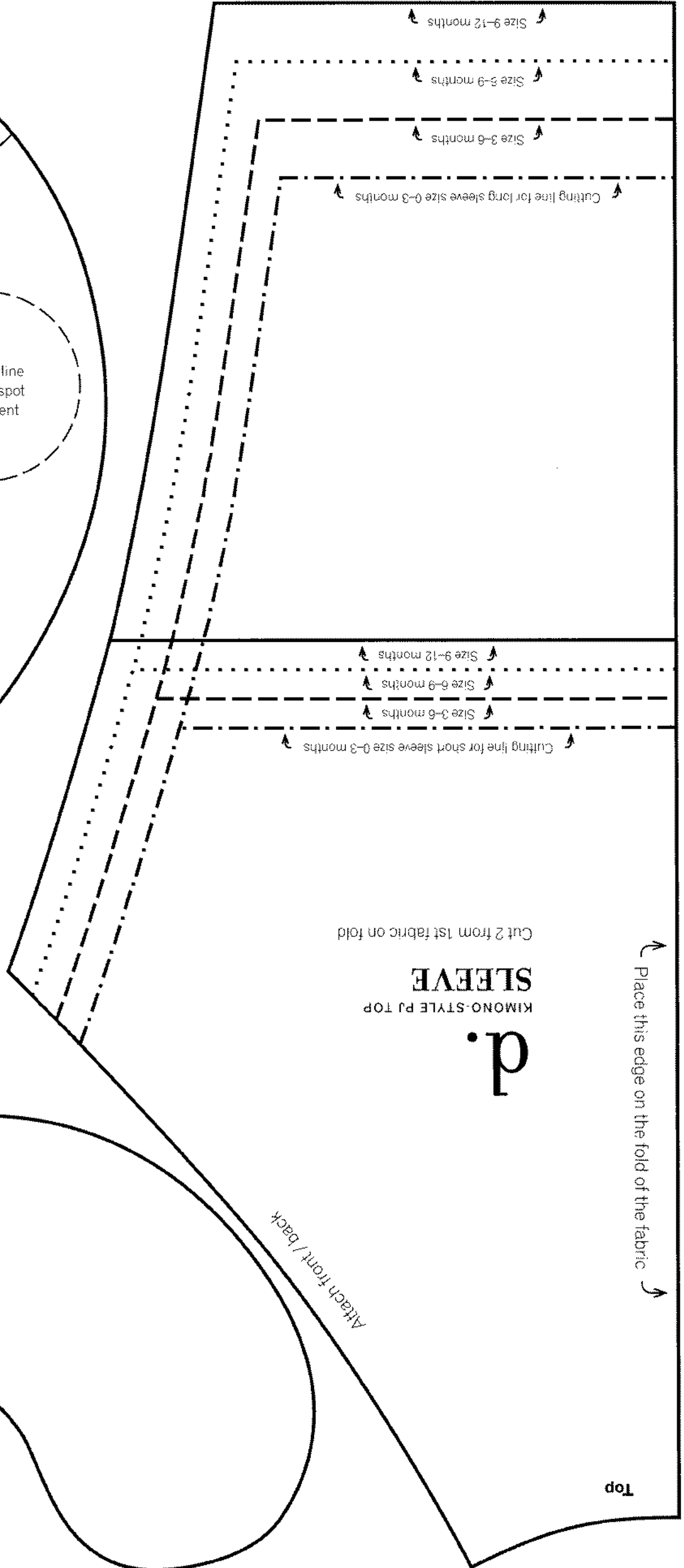
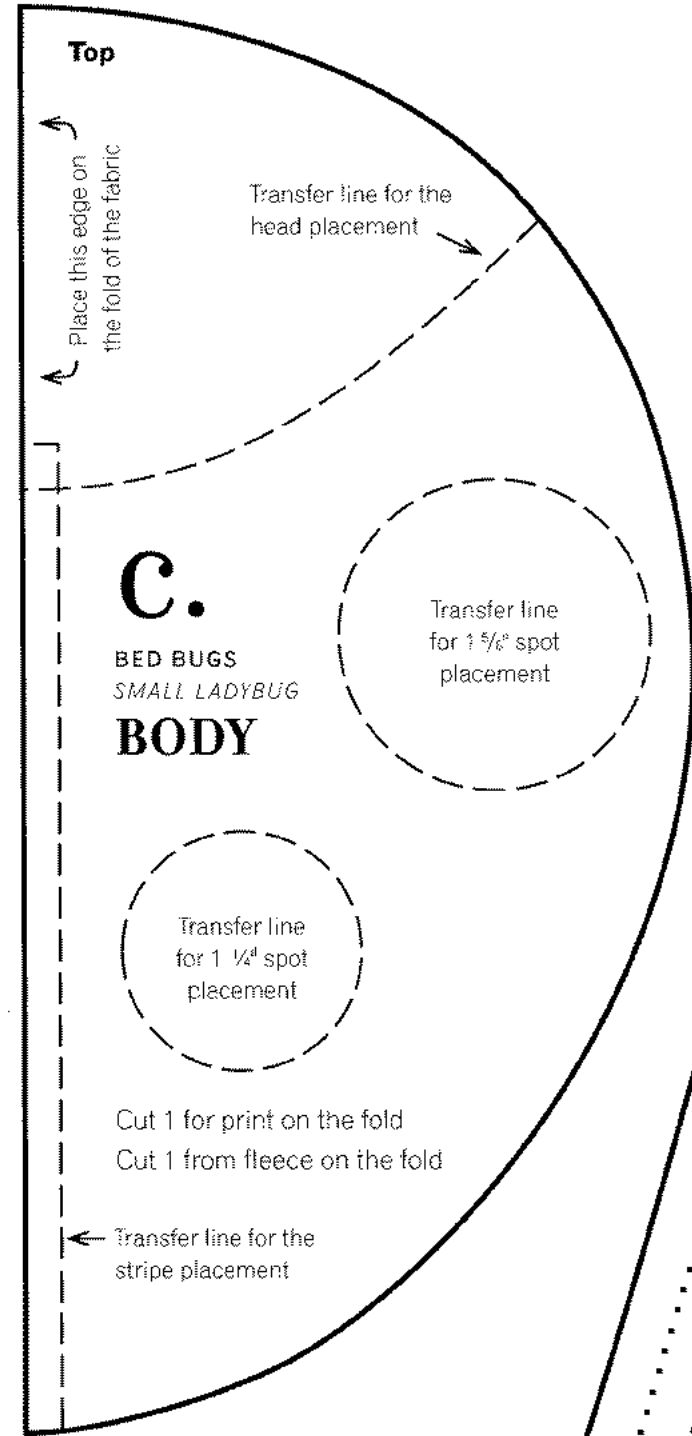
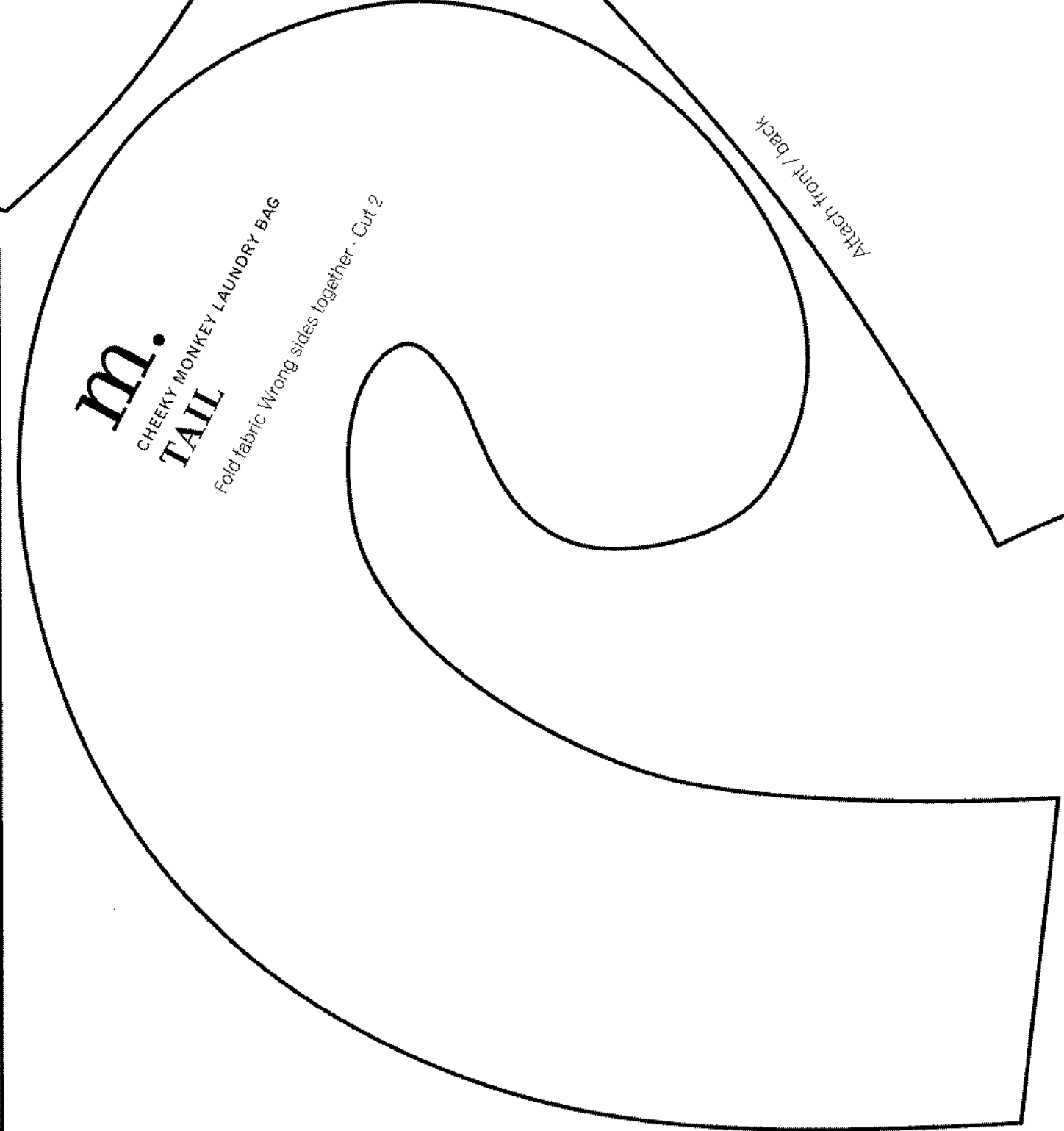
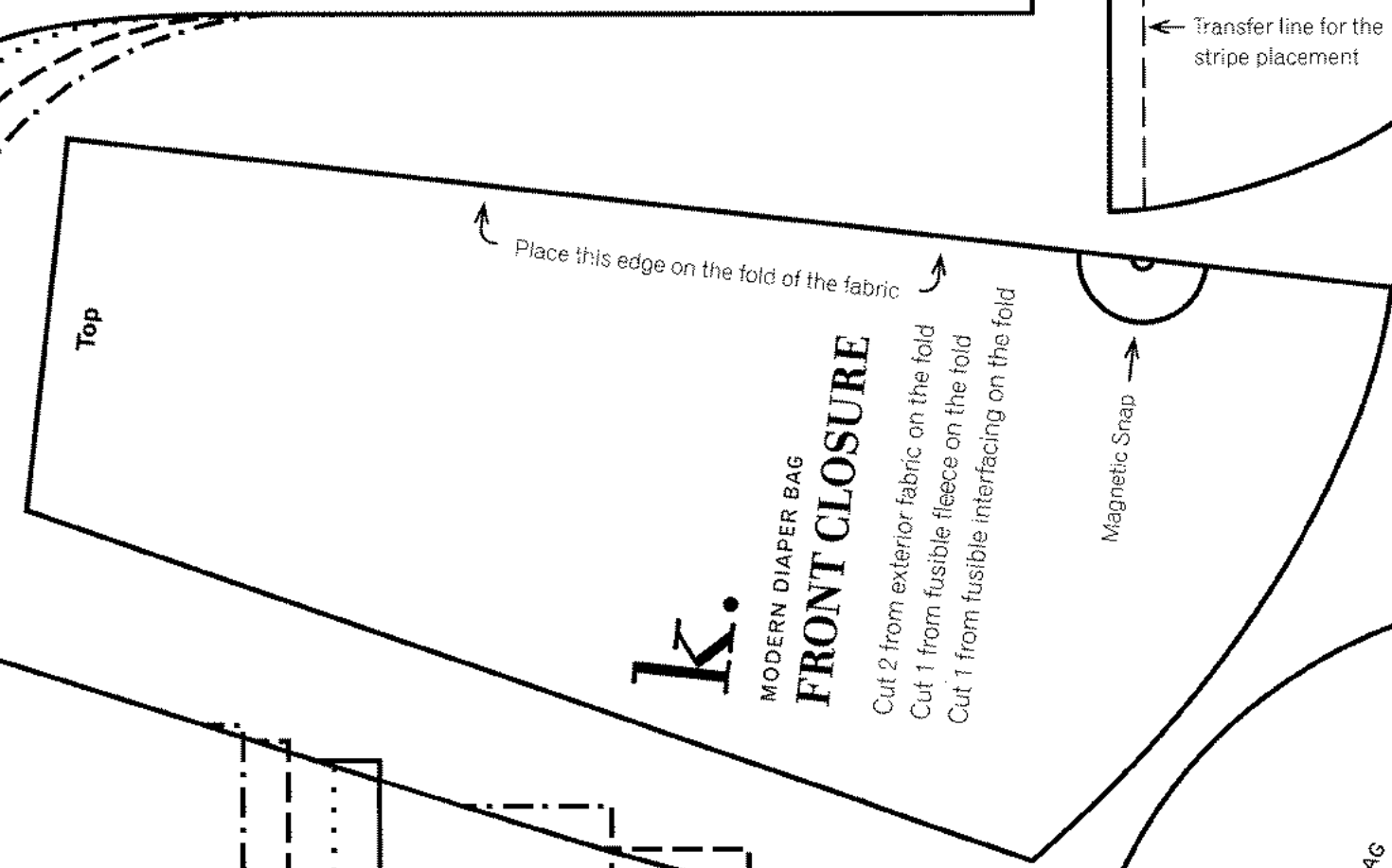
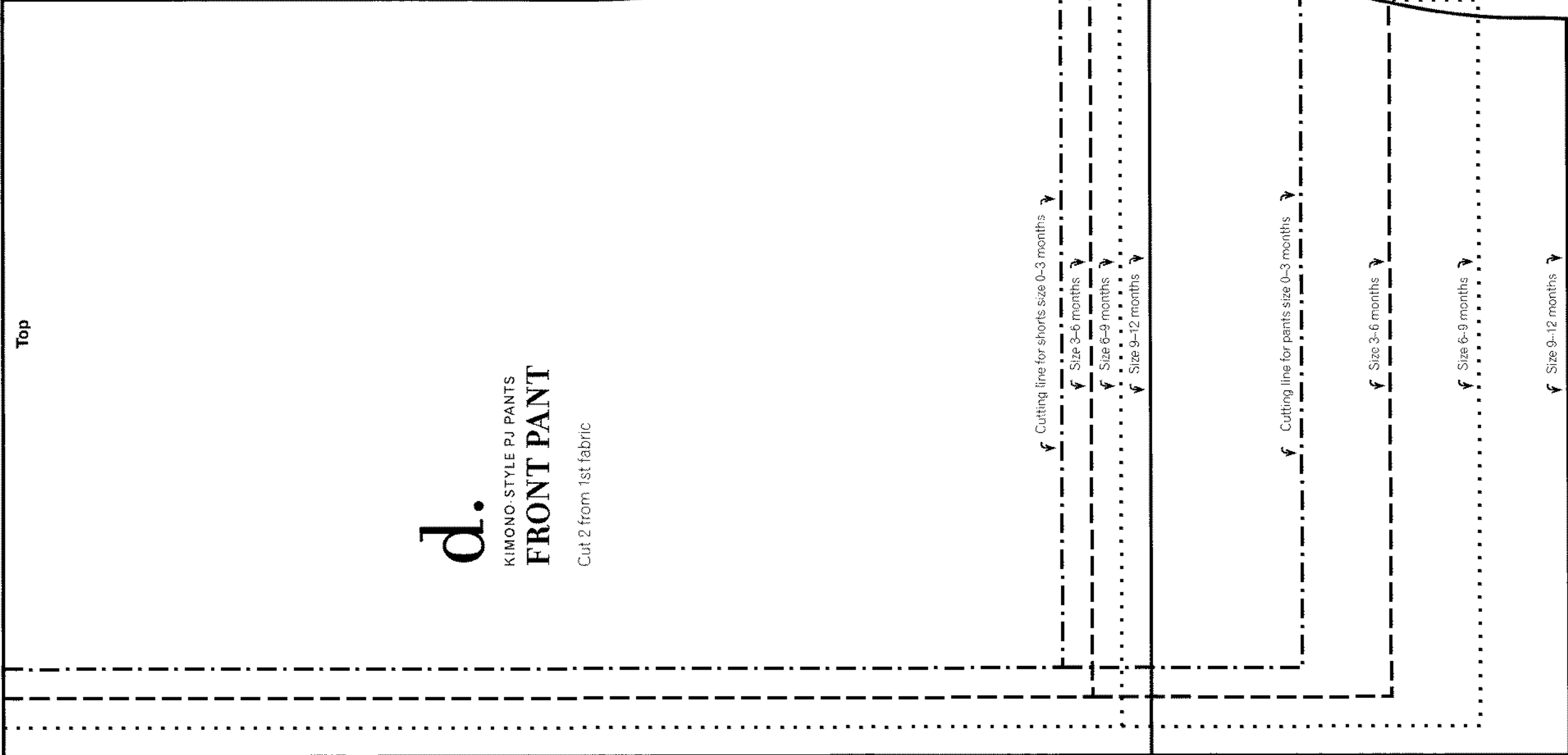
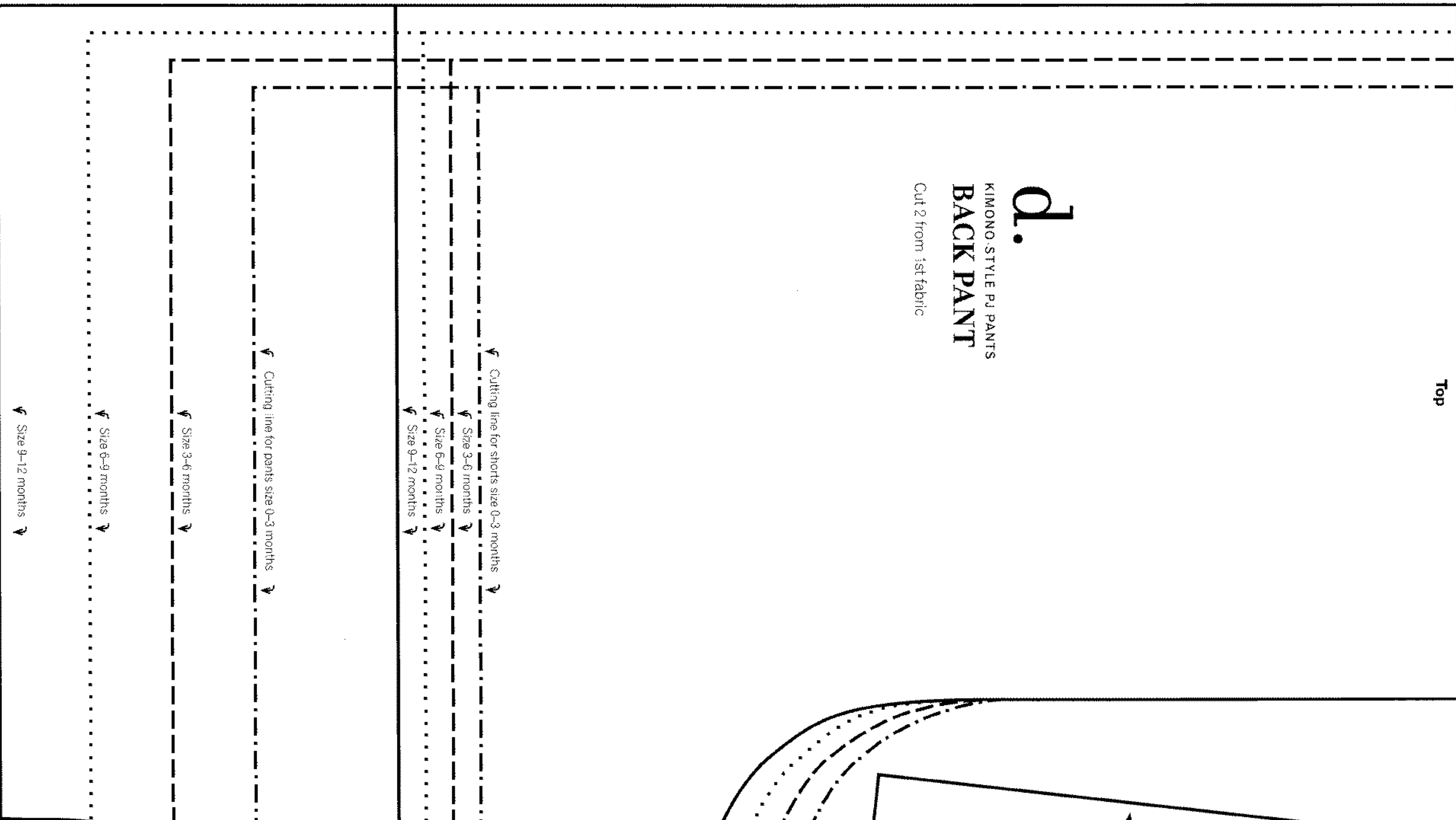
20 keepsake sewing projects for baby and mom

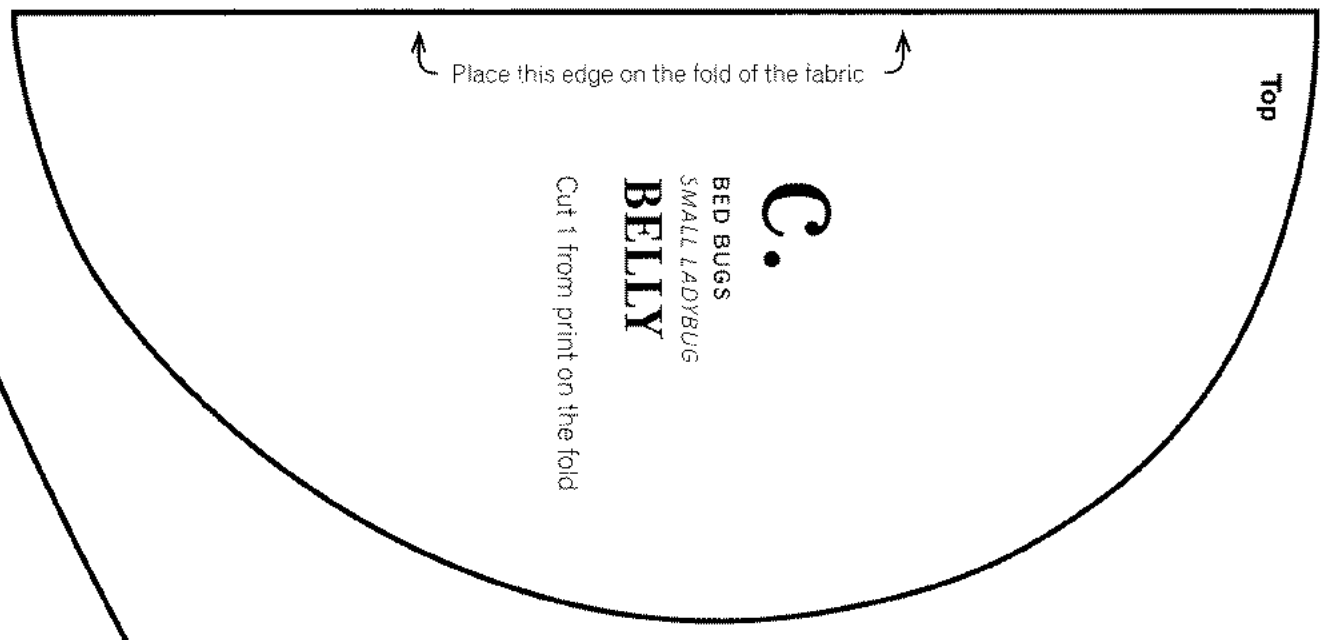
photographs by Colin McGuire

To print patterns on 8 ½-x-11-inch/A4 paper from your home computer, please follow the following “tiling” instructions. Tiling will allow you to split the large pattern page seen on screen across multiple 8 ½-x-11-inch pages, which you can then assemble into the large pattern page to use for your project. Alternatively, you can make use of a large-format printer at your local copy center.

For best printing results, print from Adobe Reader version X or higher. (Tiling options are not available on version 9 or lower.)

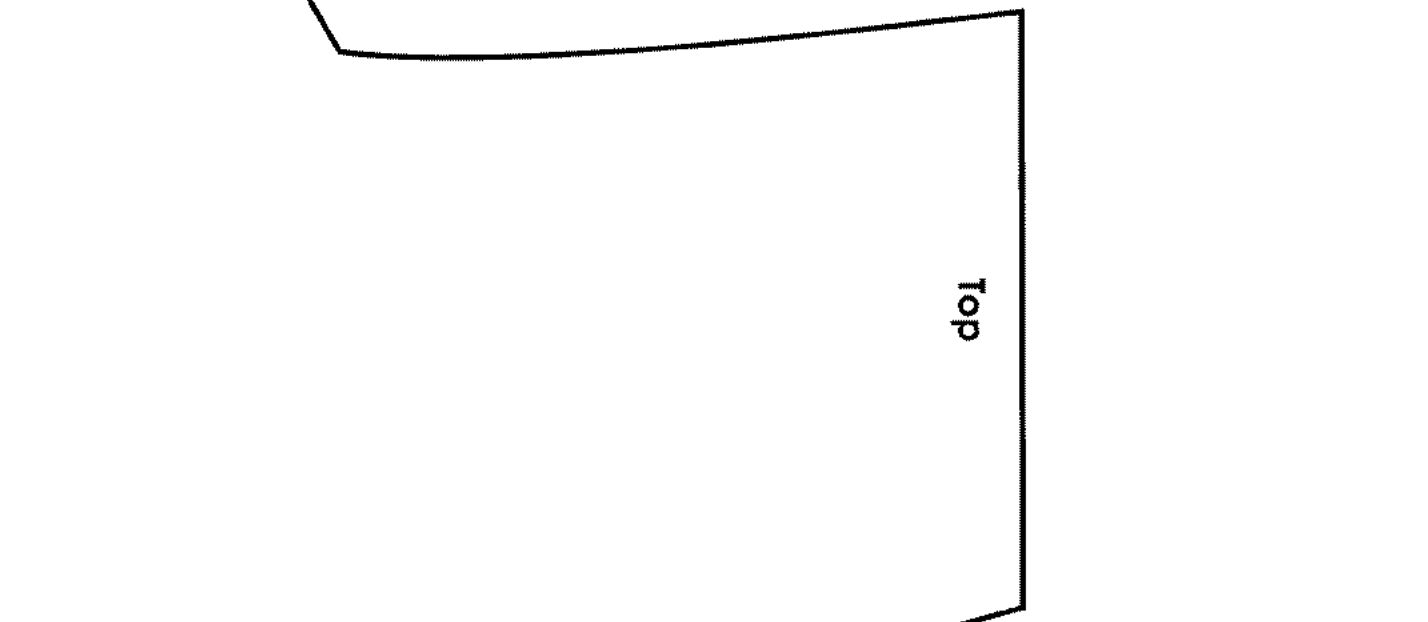
1. Open PDF and resave PDF onto your computer.
2. Open resaved PDF and choose Print.
3. Under Paper Size and Handling menu, choose Poster.
4. Select Cut Marks and Tile only large pages and Labels options.
5. Press OK to print.
6. Use the cut marks to line up the pages and tape together to assemble into large pattern page.





C.
BED BUGS
SMALL LADYBUG
BELLY
Cut 1 from print on the fold

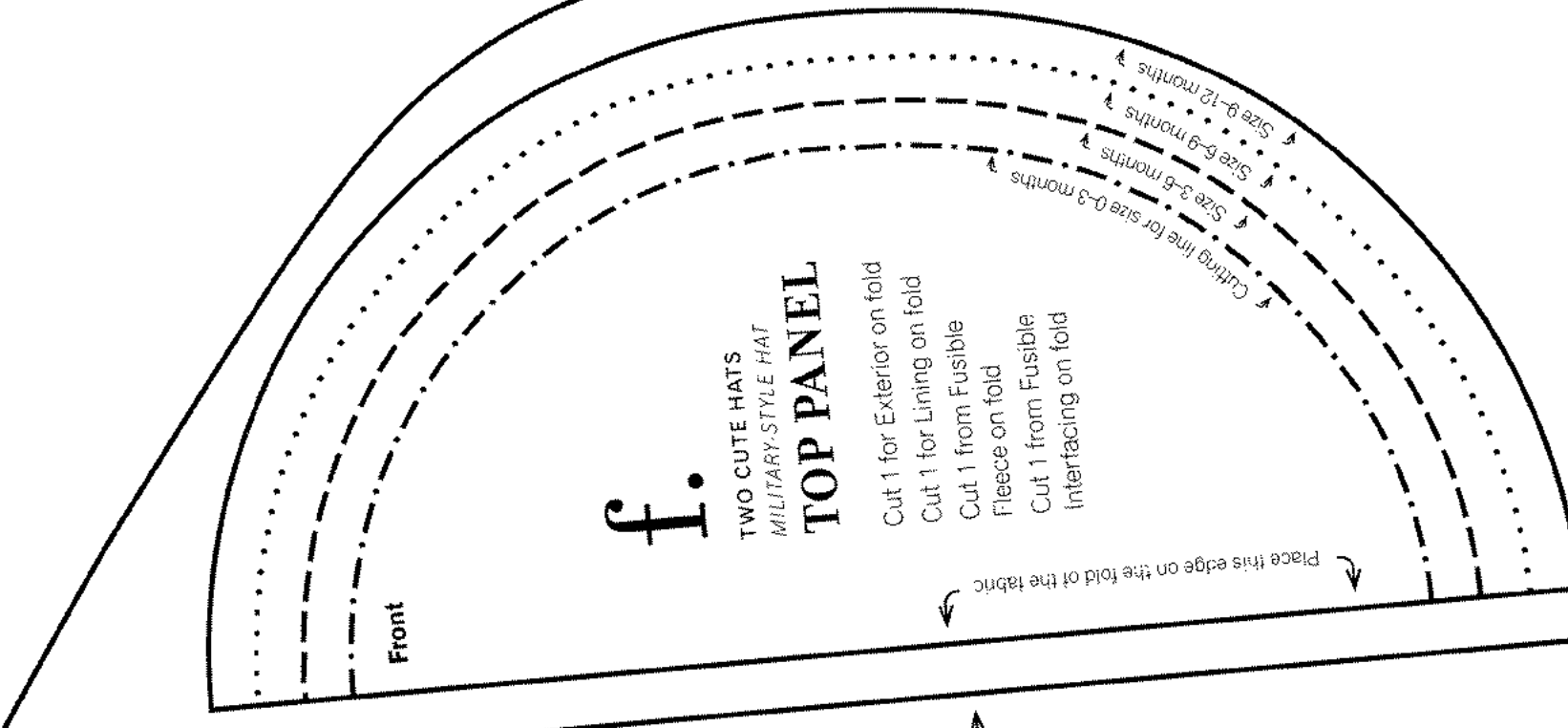
Place this edge on the fold of the fabric



f.
TWO CUTE HATS
MILITARY-STYLE HAT
TOP PANEL
Cut 1 for Exterior on fold
Cut 1 for Lining on fold
Cut 1 from Fusible Fleece on fold
Cut 1 from Fusible Interfacing on fold

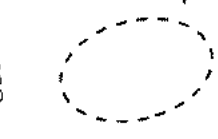
Cutting line for size 0-3 months
Size 0-3 months
Size 3-6 months
Size 6-9 months
Size 9-12 months

Place this edge on the fold of the fabric



i.
TRAVEL BIBS WITH STORAGE CASE
FRONT / BACK PANEL
Cut 1 from 1st print on fold
Cut 1 from 2nd print on fold
FOR PIGGY TRAVEL BIB
Cut 2 from solid on fold

Transfer lines for Piggy Eyes onto the **Right** side of the front panel



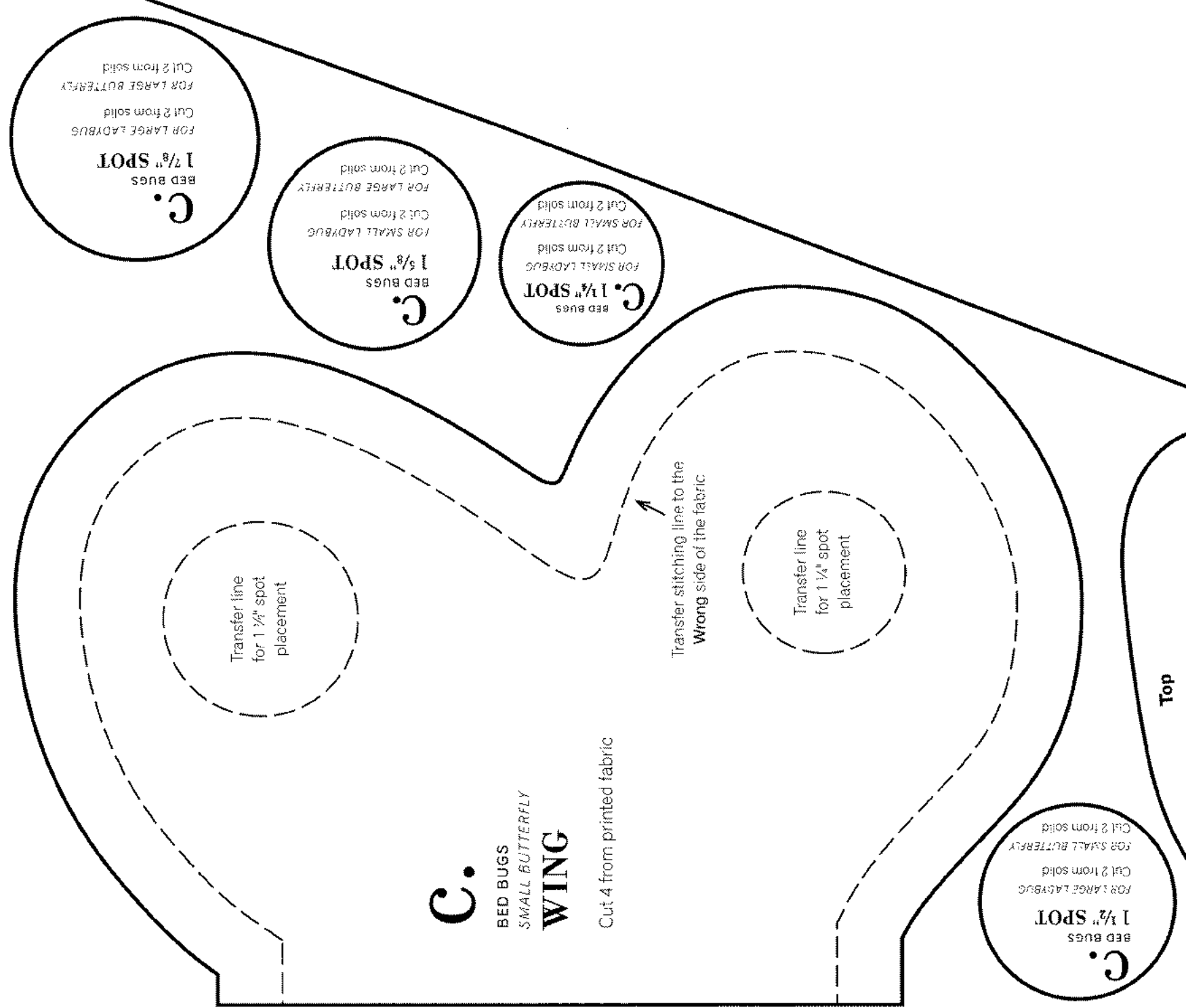
Place this edge on the fold of the fabric

K.

MODERN DIAPER BAG
MAIN PANEL

Cut 2 for exterior on the fold
Cut 2 for lining on the fold
Cut 4 fusible fleece on the fold
Cut 2 fusible mid-weight interfacing on the fold

Place this edge on the fold of the fabric



C.
BED BUGS
SMALL BUTTERFLY
WING
Cut 4 from printed fabric

C.
BED BUGS
1 1/2" SPOT
FOR LARGE LADYBUG
Cut 2 from solid

C.
BED BUGS
1 1/2" SPOT
FOR SMALL LADYBUG
Cut 2 from solid

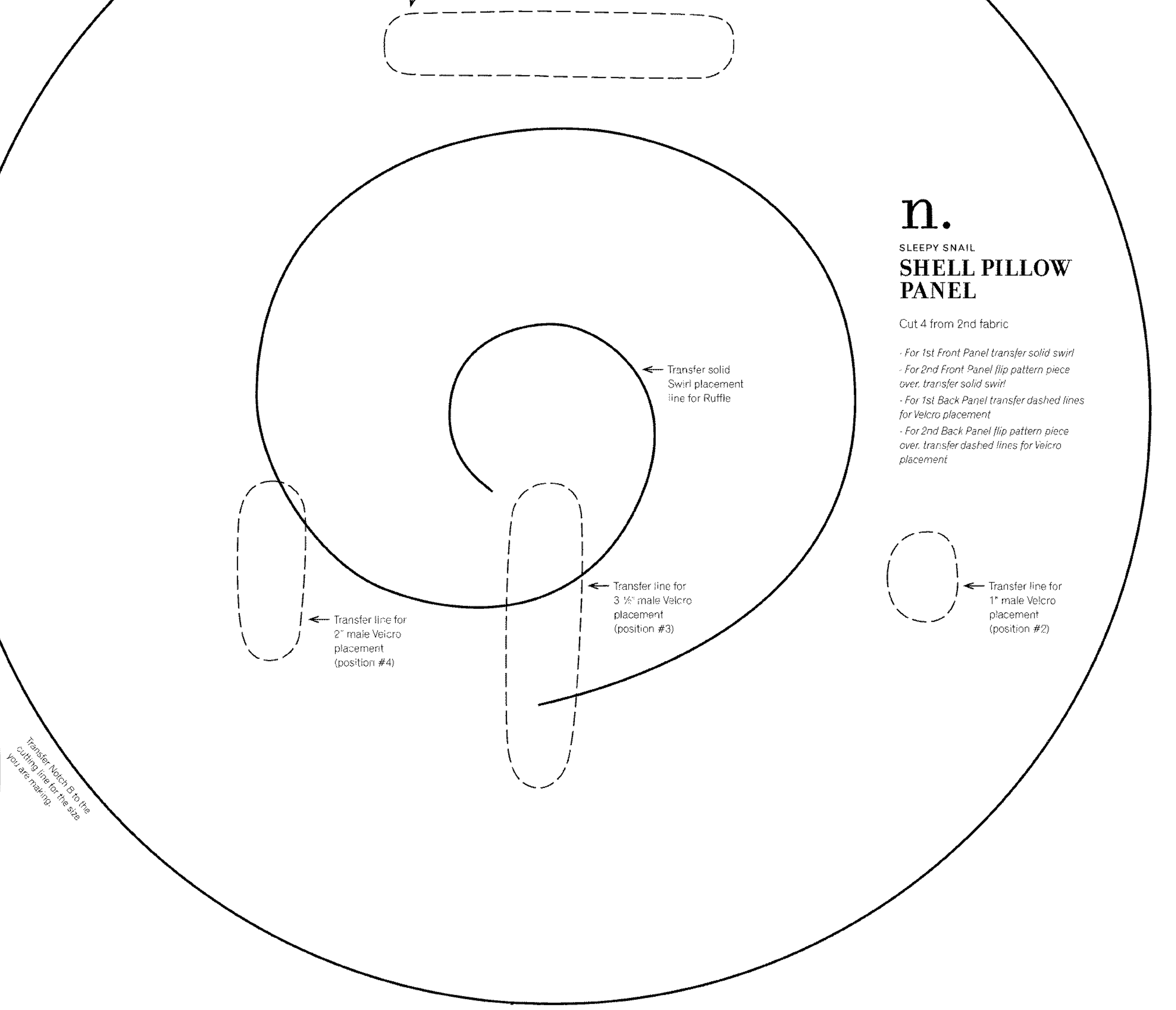
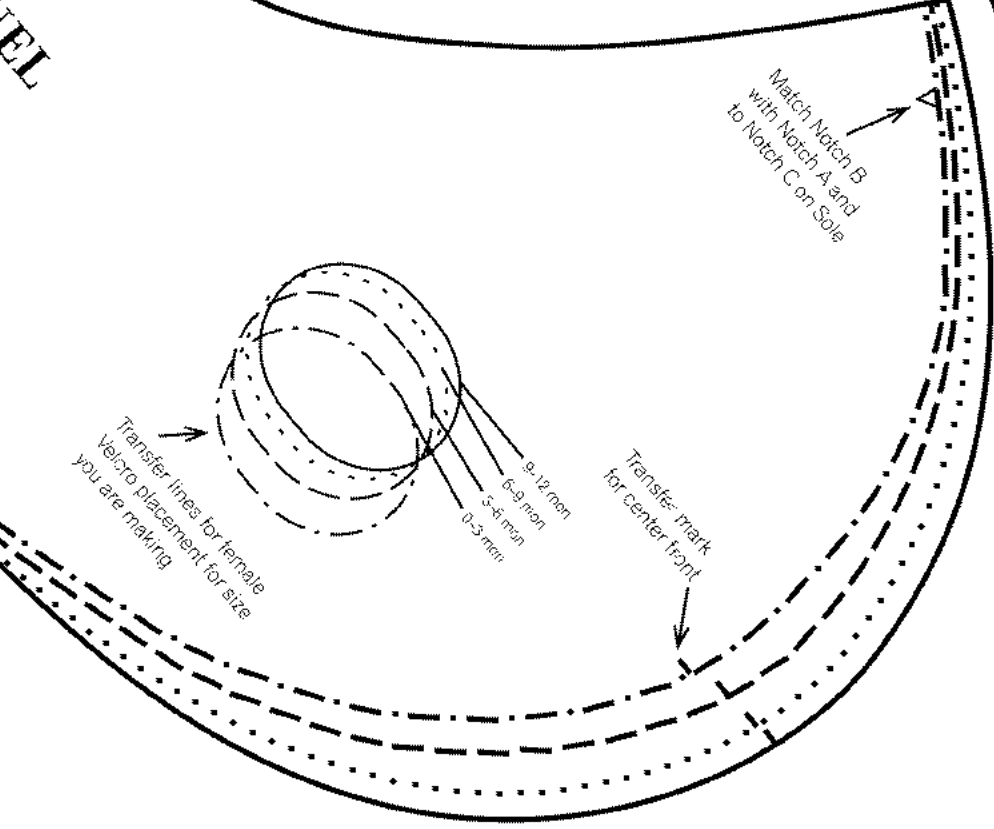
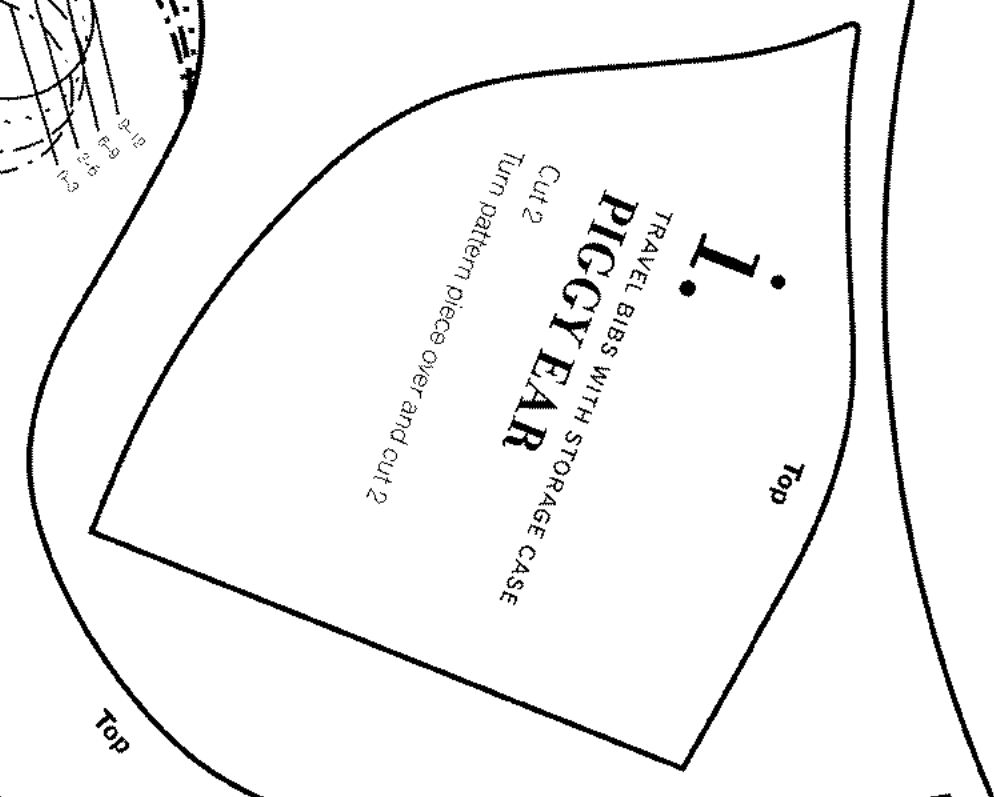
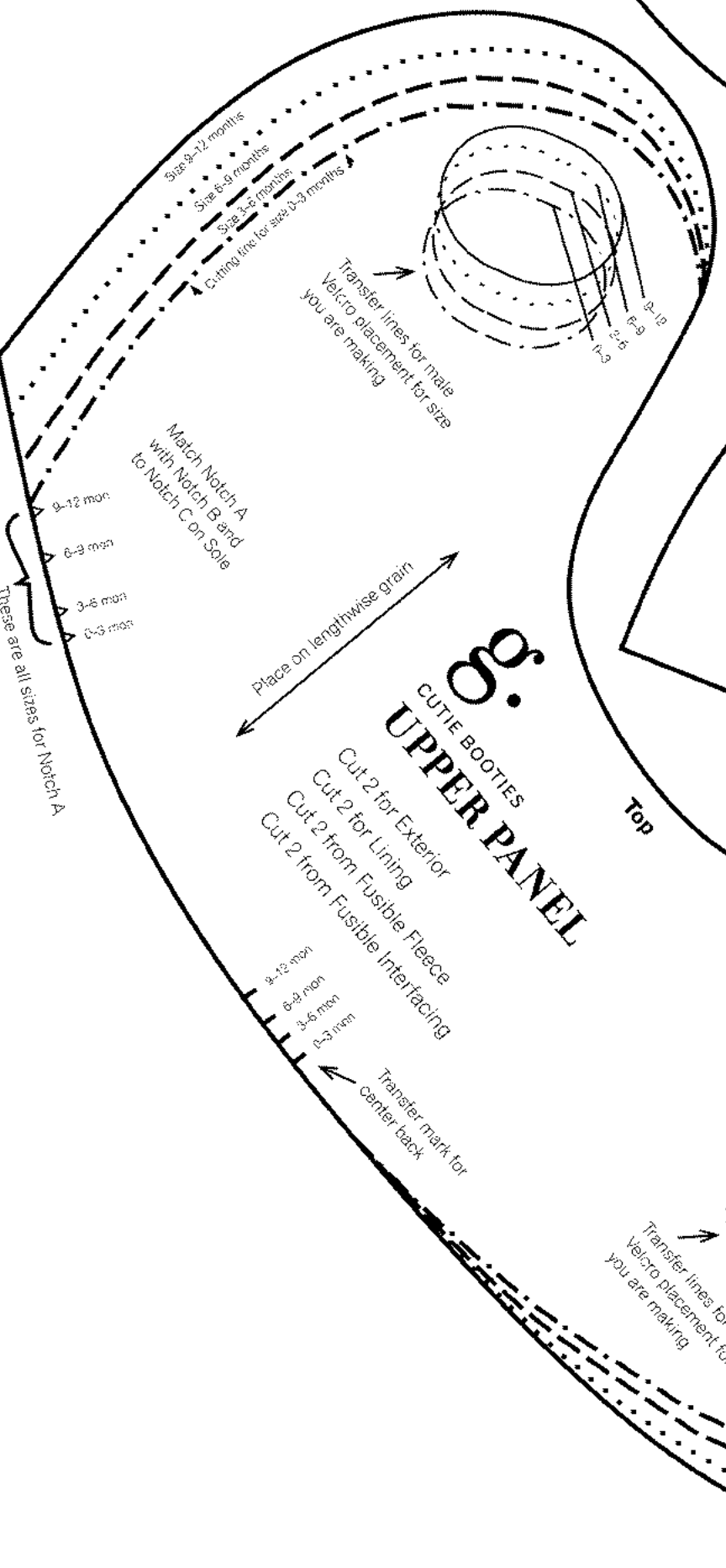
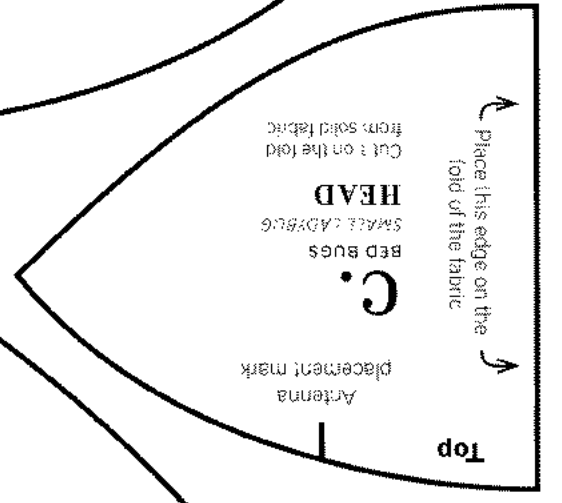
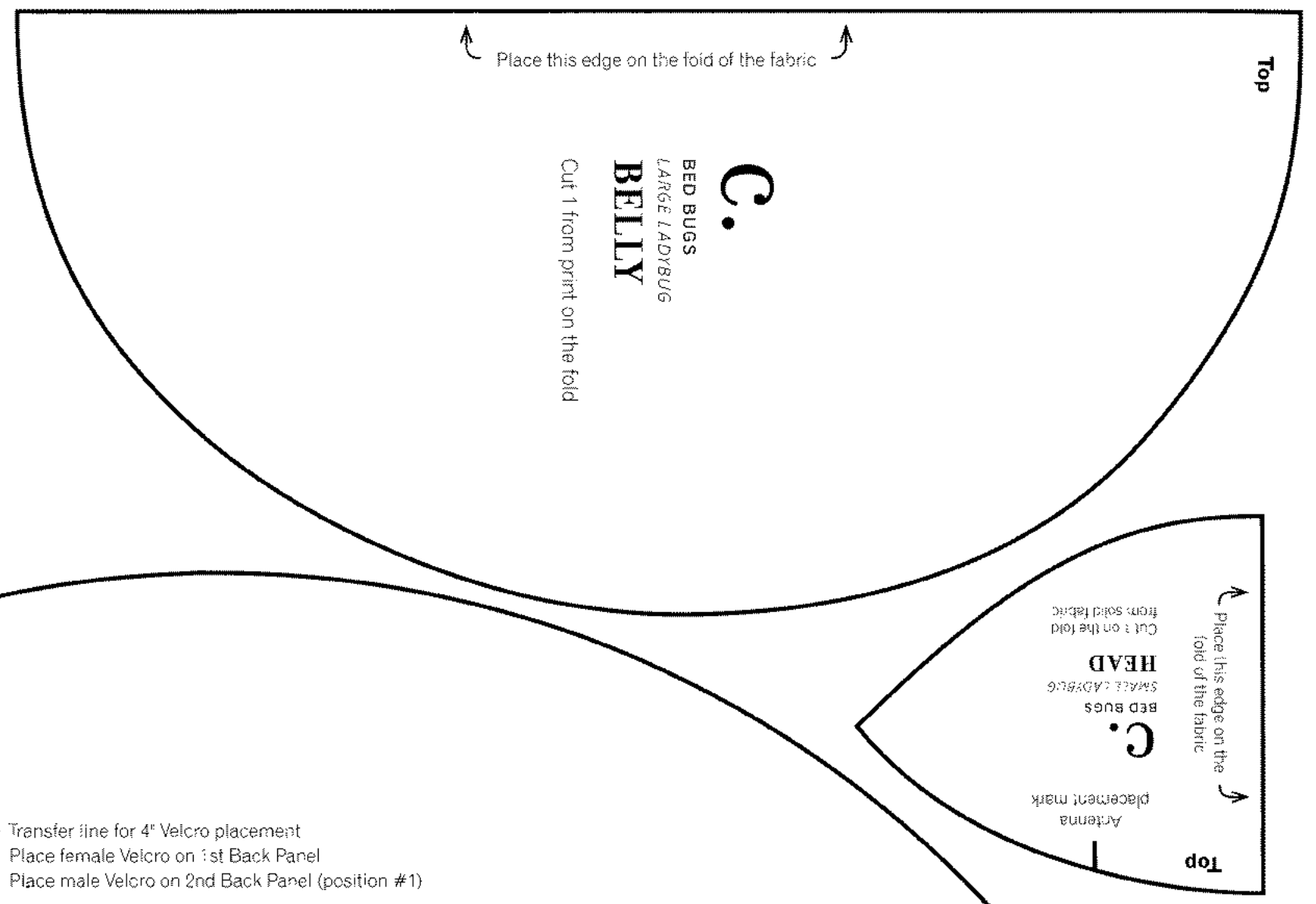
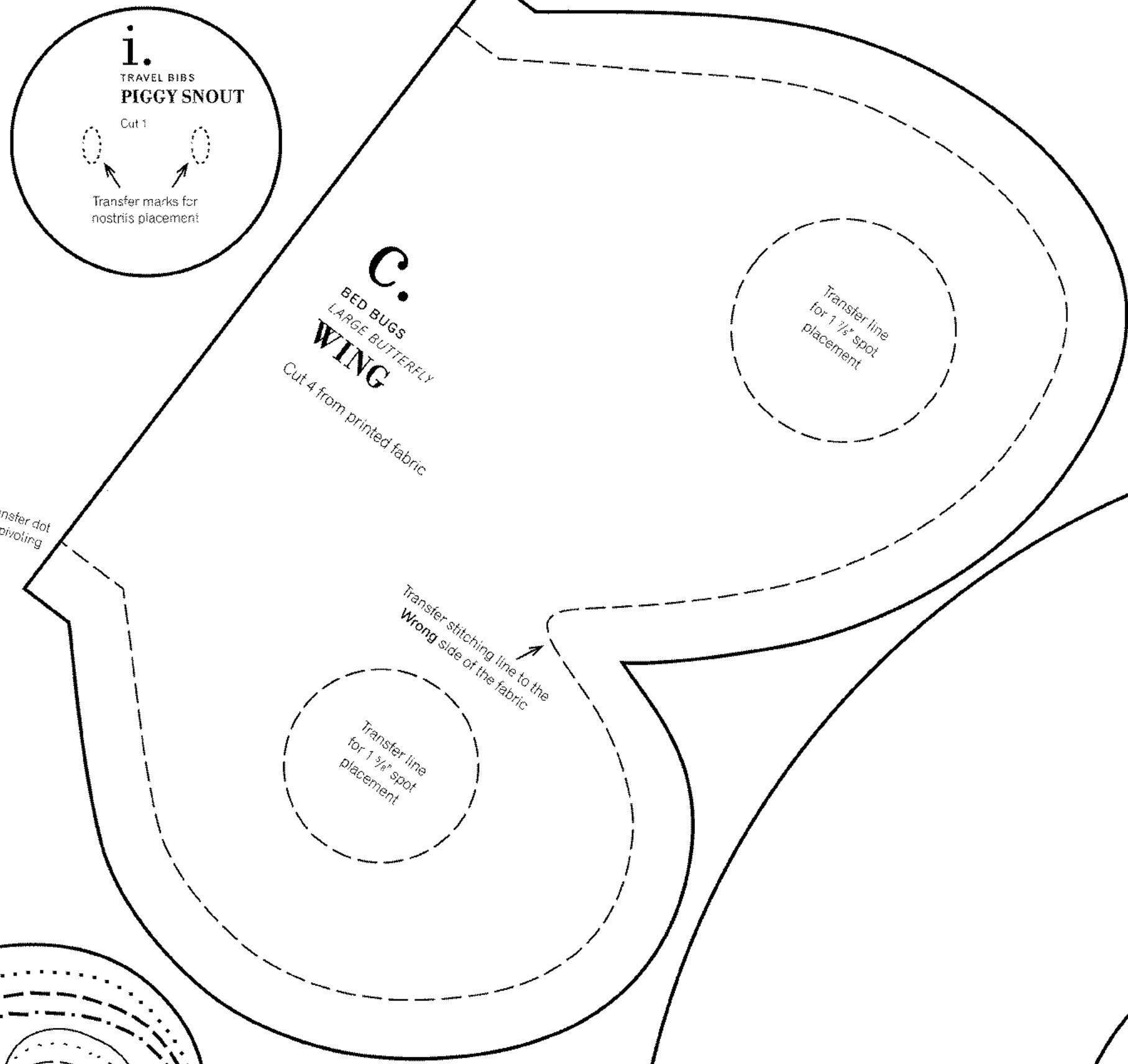
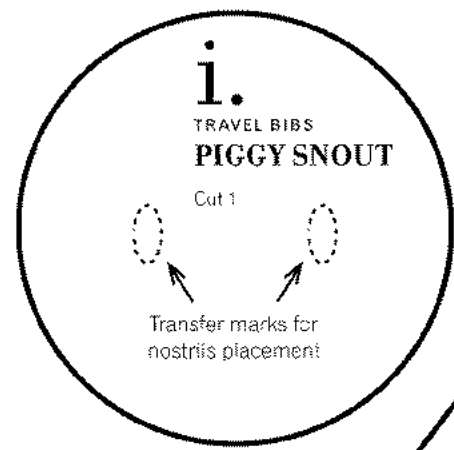
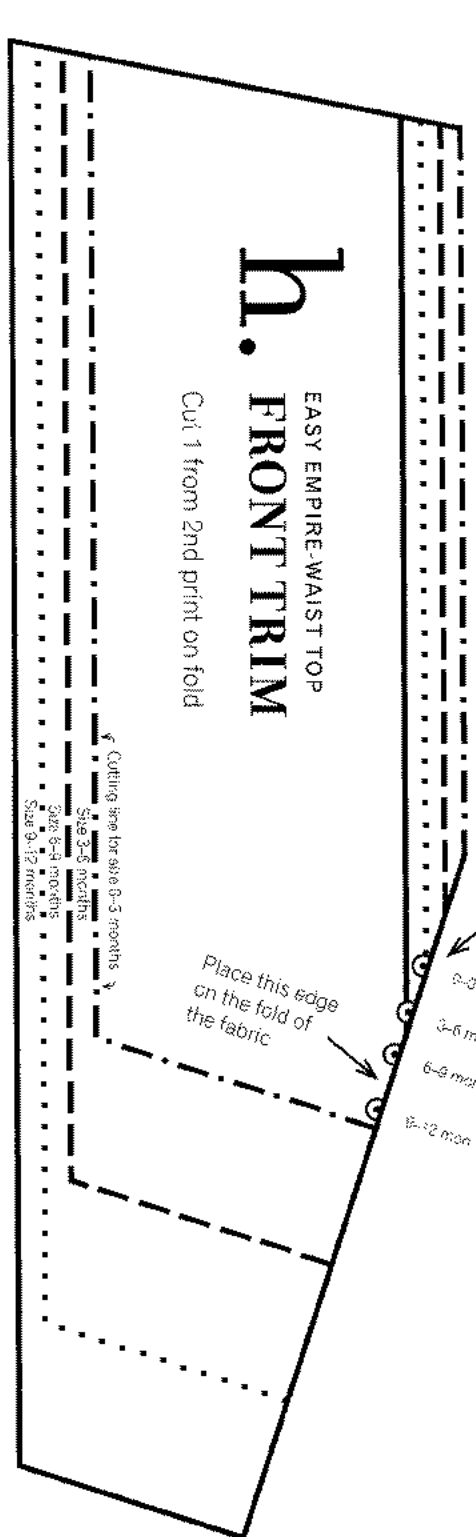
C.
BED BUGS
1 5/8" SPOT
FOR LARGE LADYBUG
Cut 2 from solid

C.
BED BUGS
1 7/8" SPOT
FOR LARGE LADYBUG
Cut 2 from solid

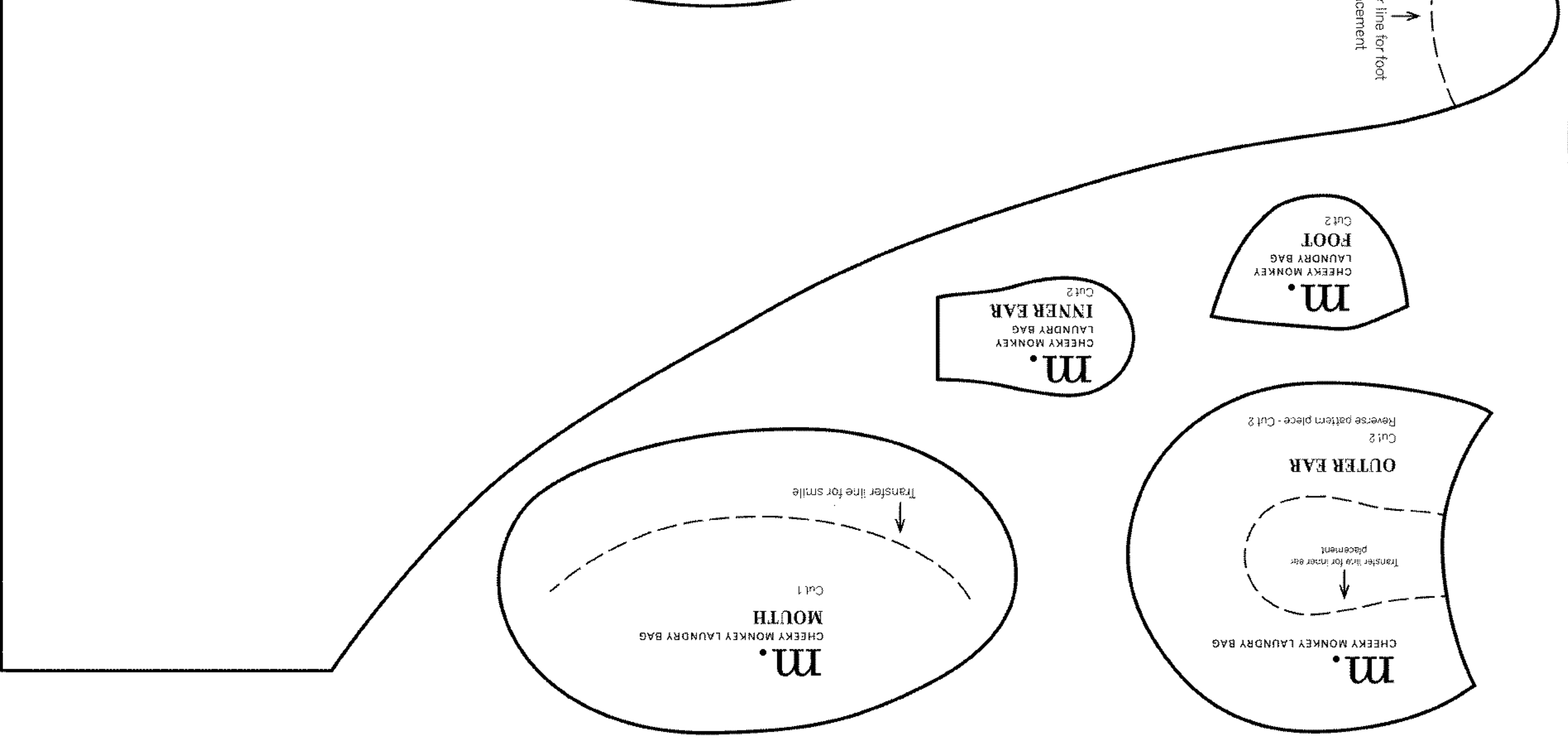
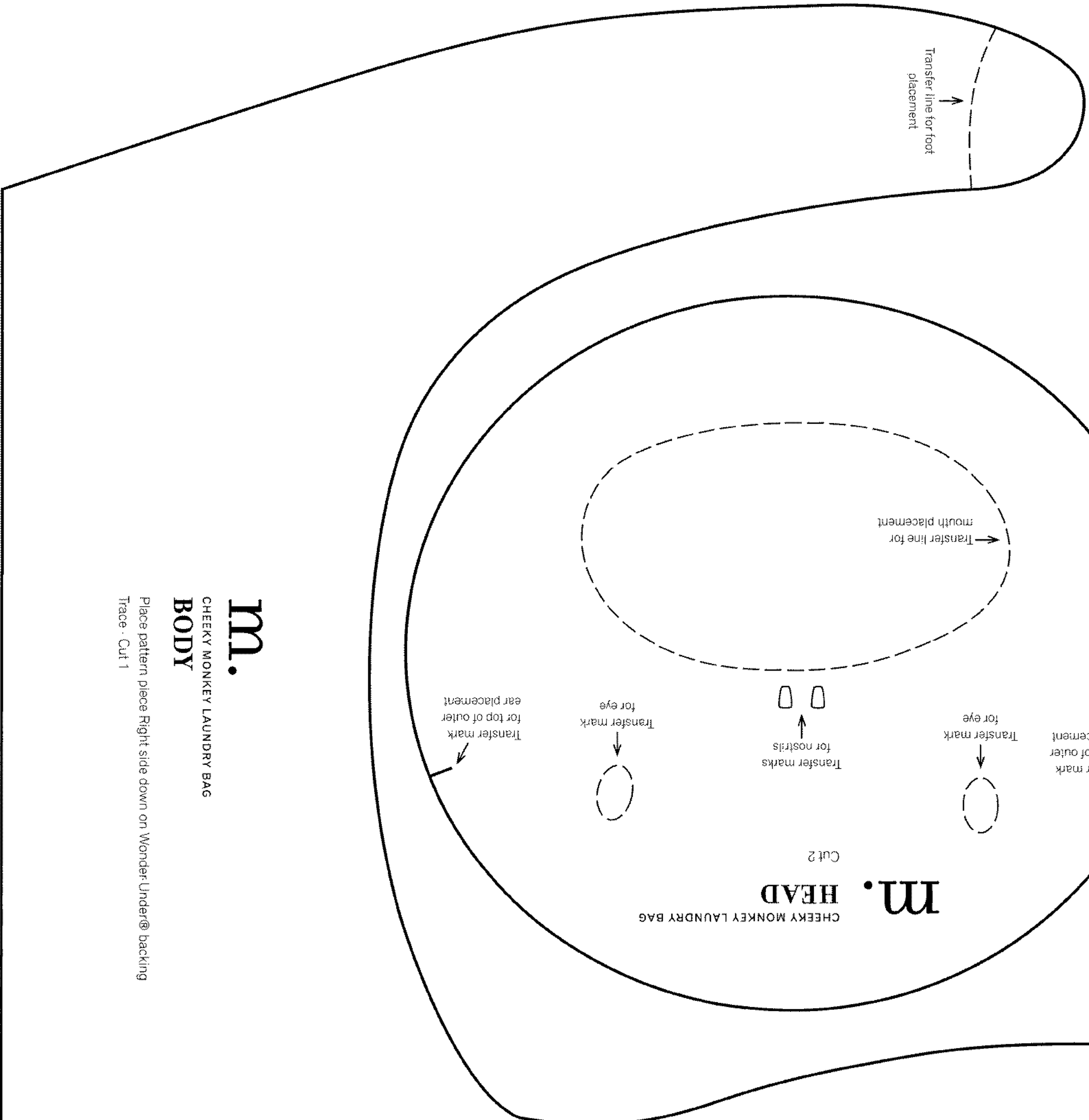
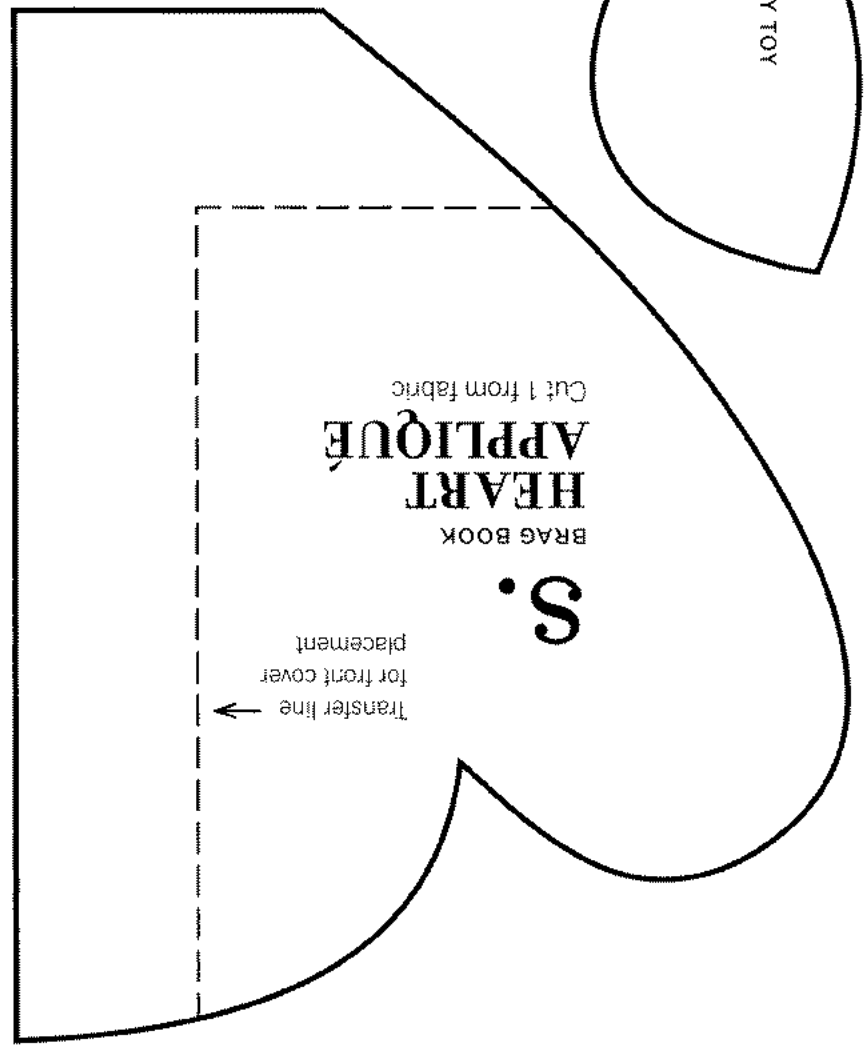
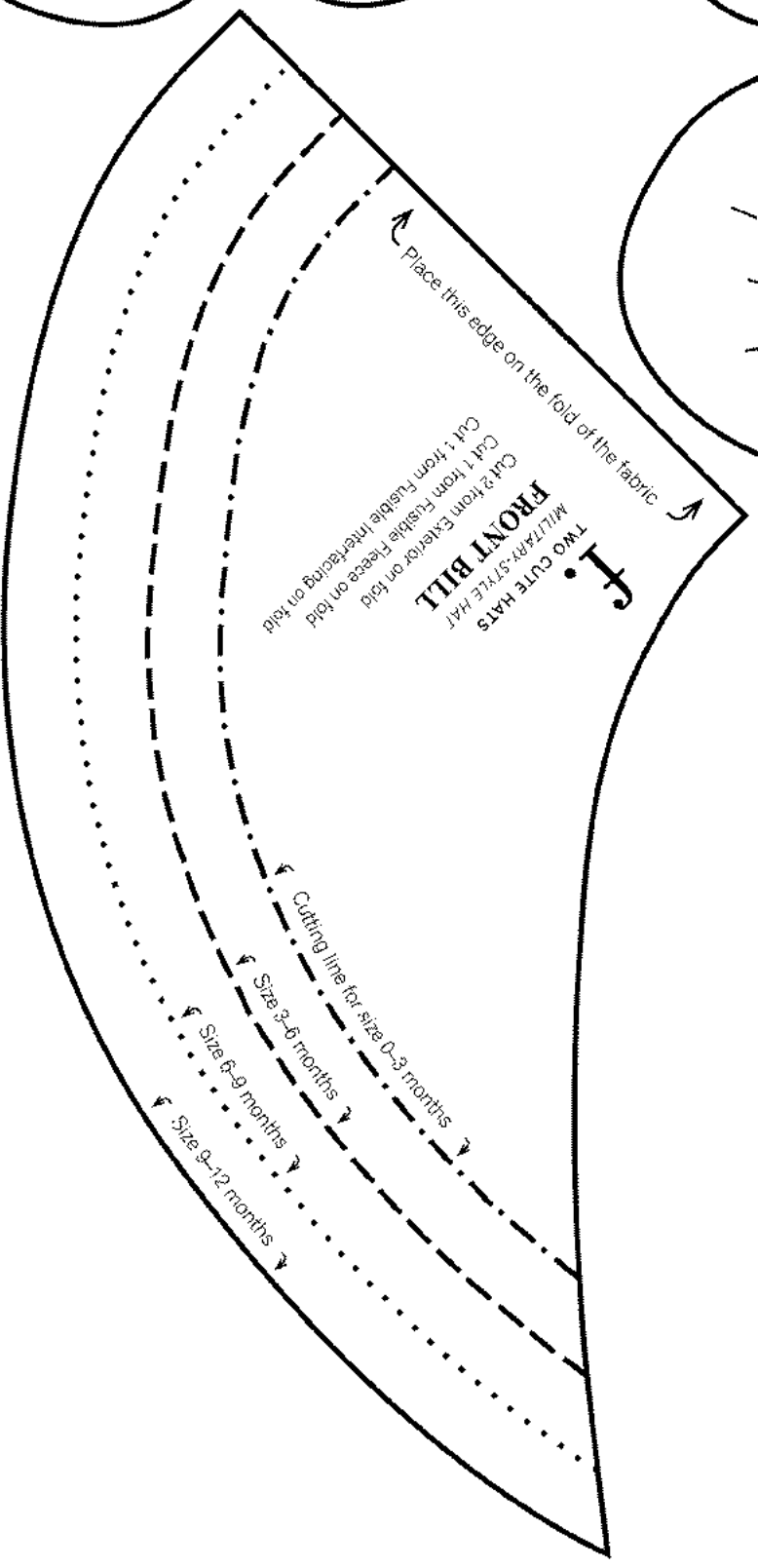
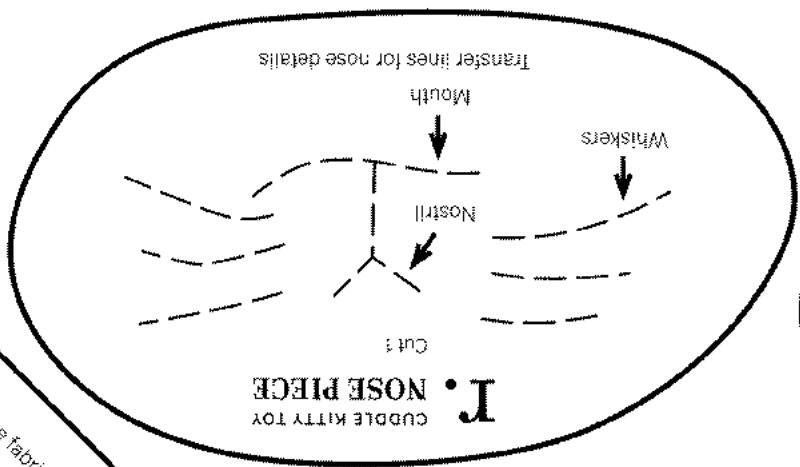
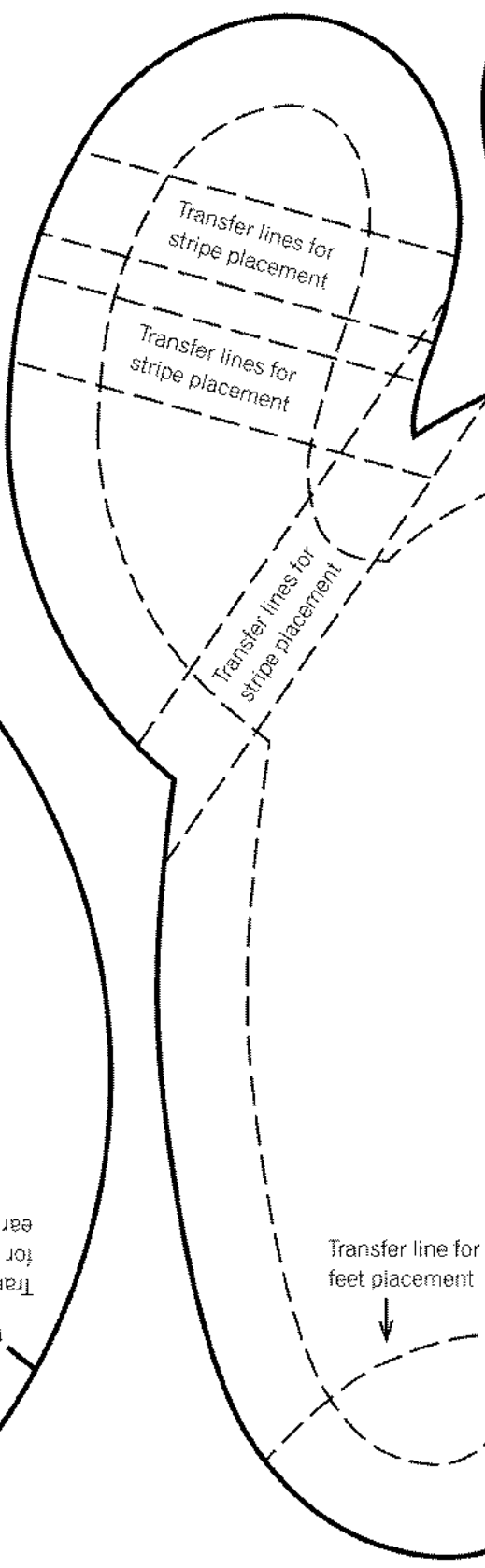
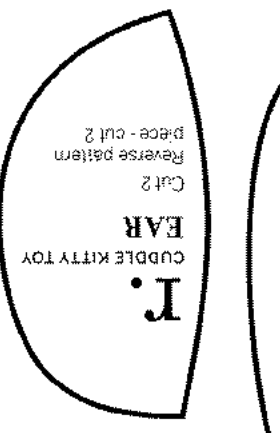
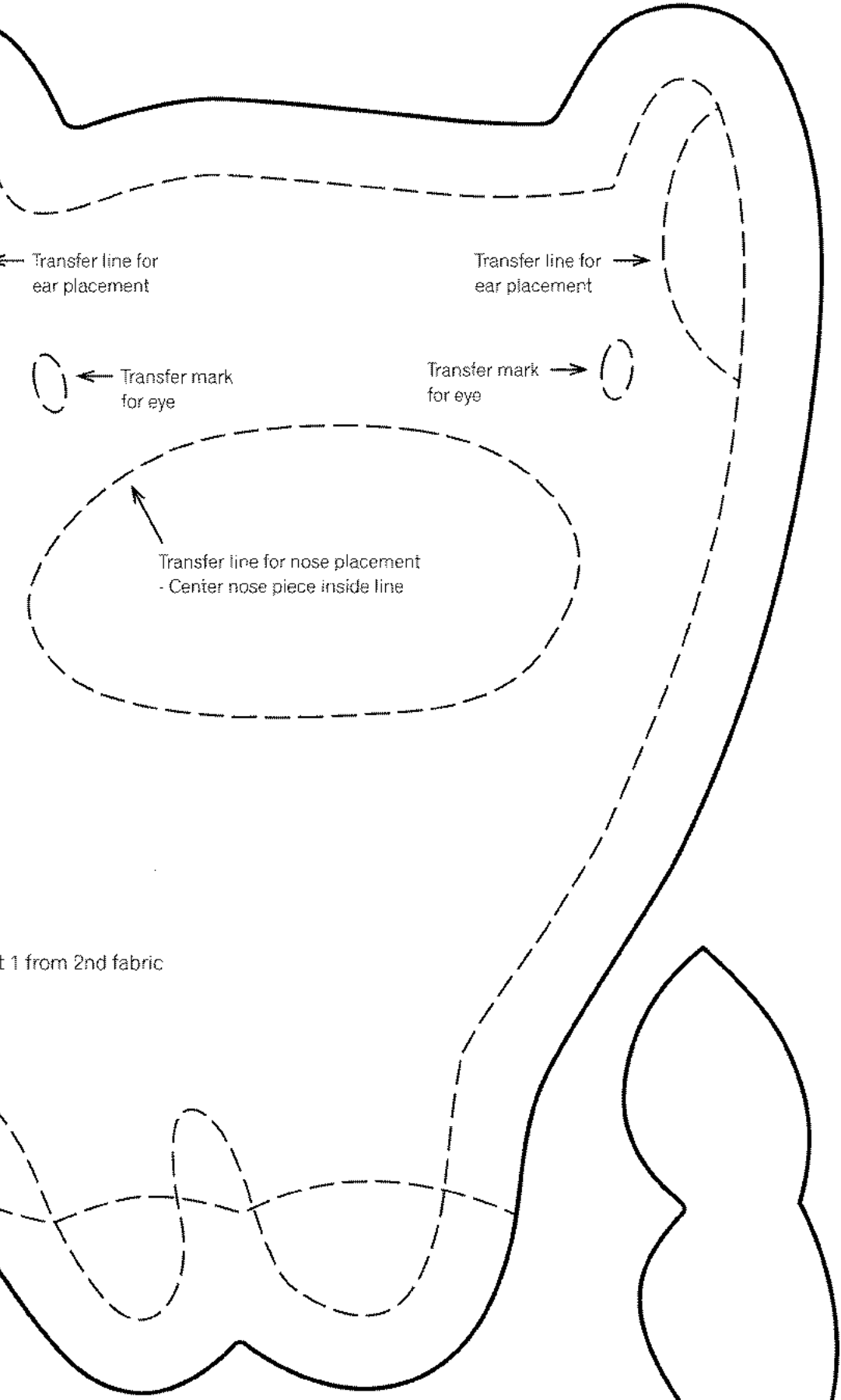
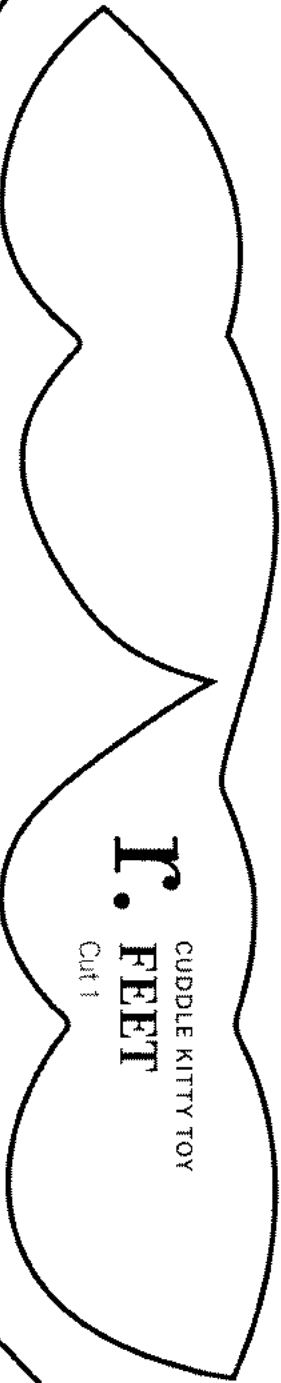
Transfer stitching line to the **Wrong** side of the fabric

Transfer line for 1 1/4" spot placement

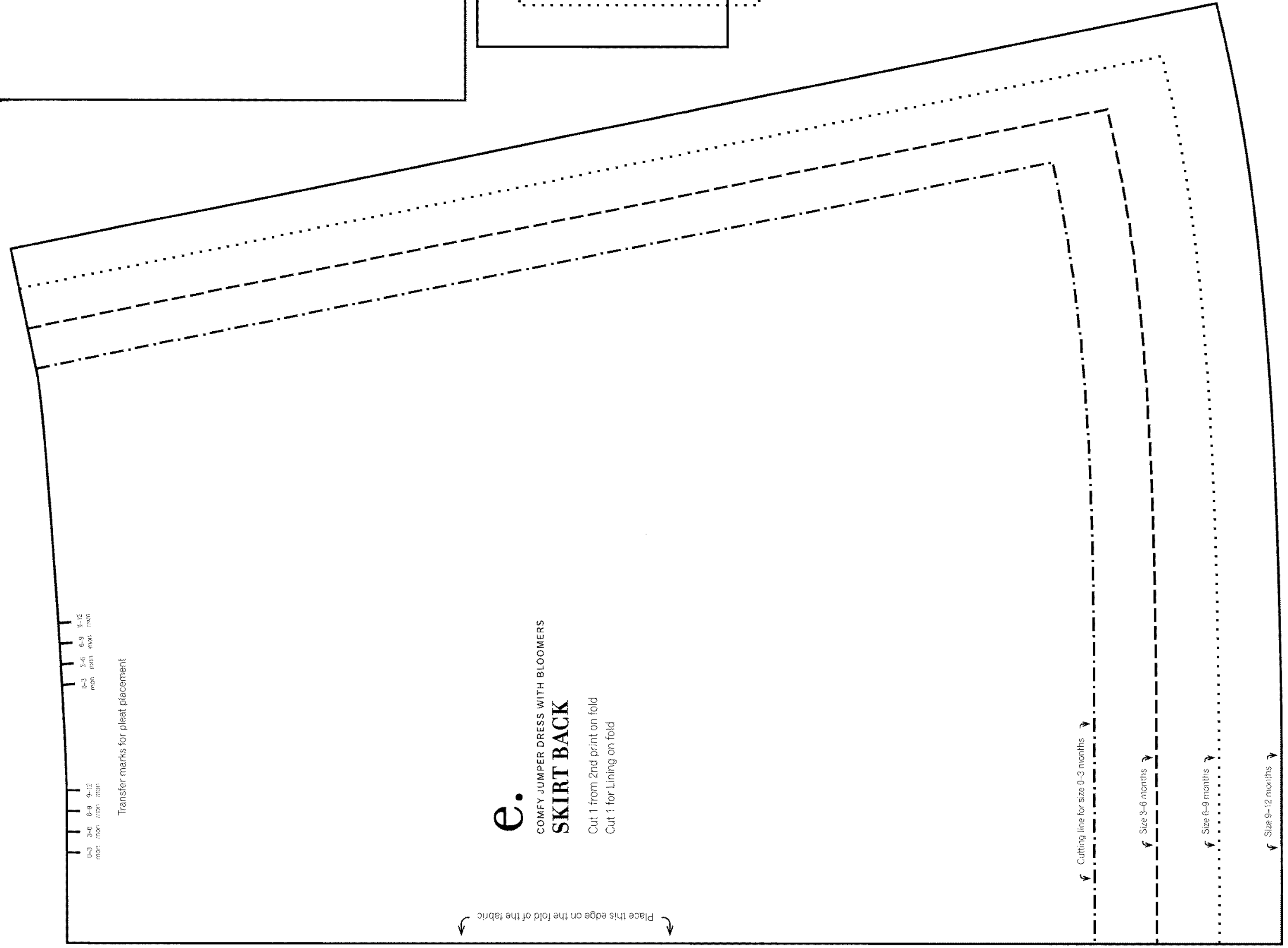
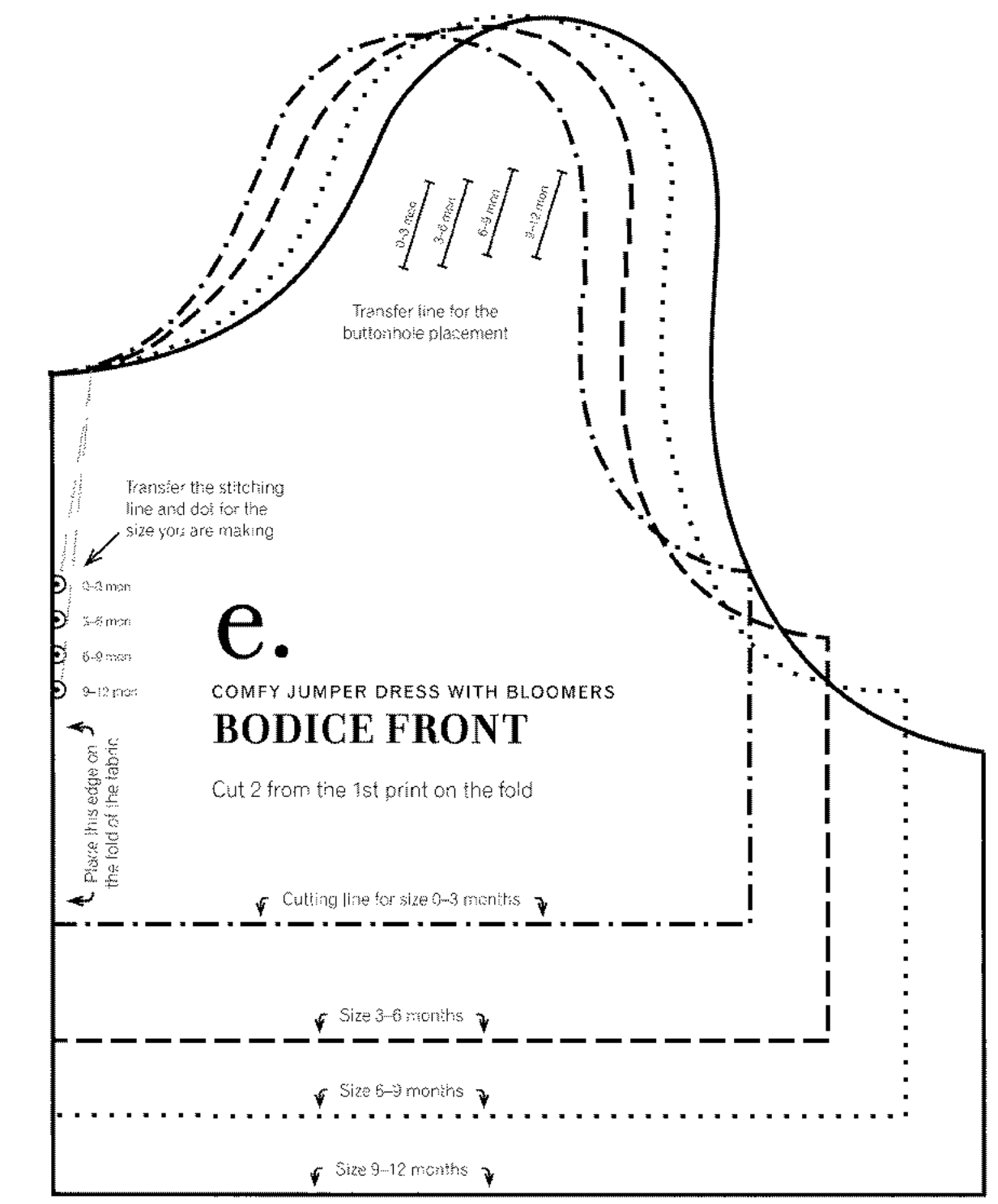
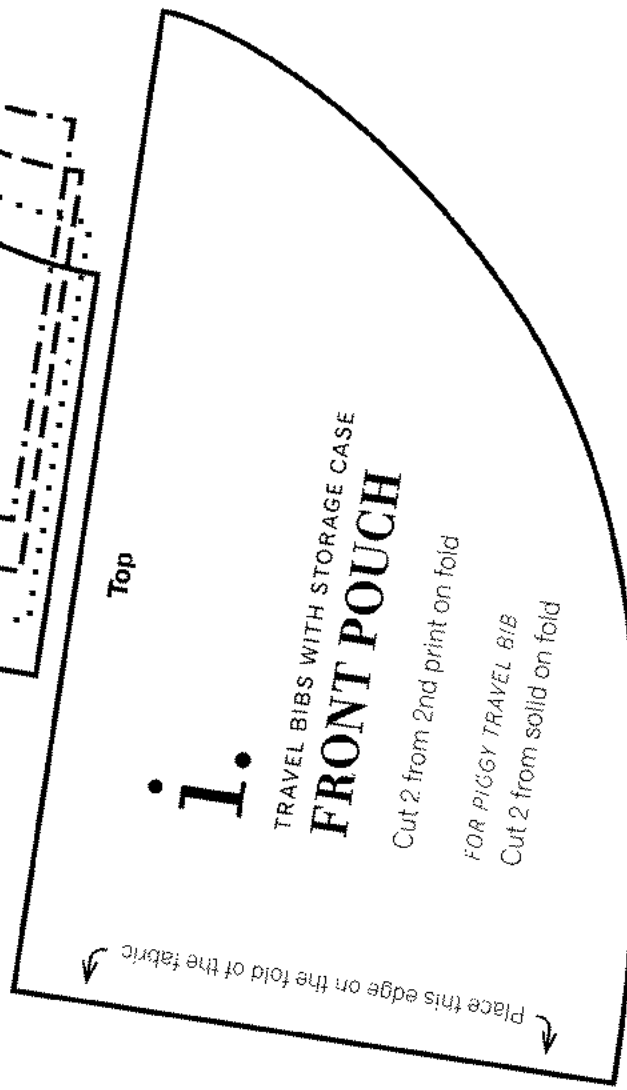
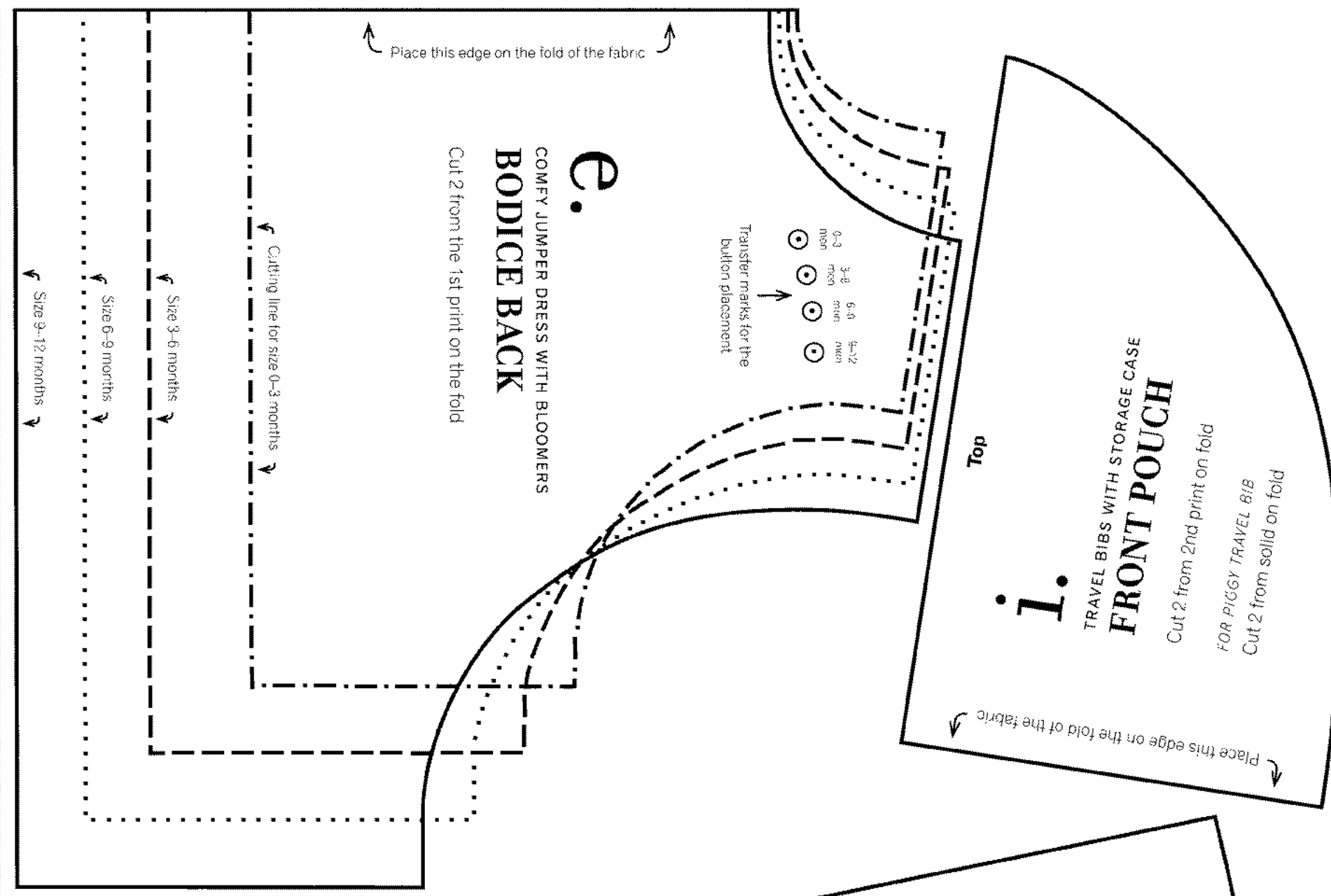
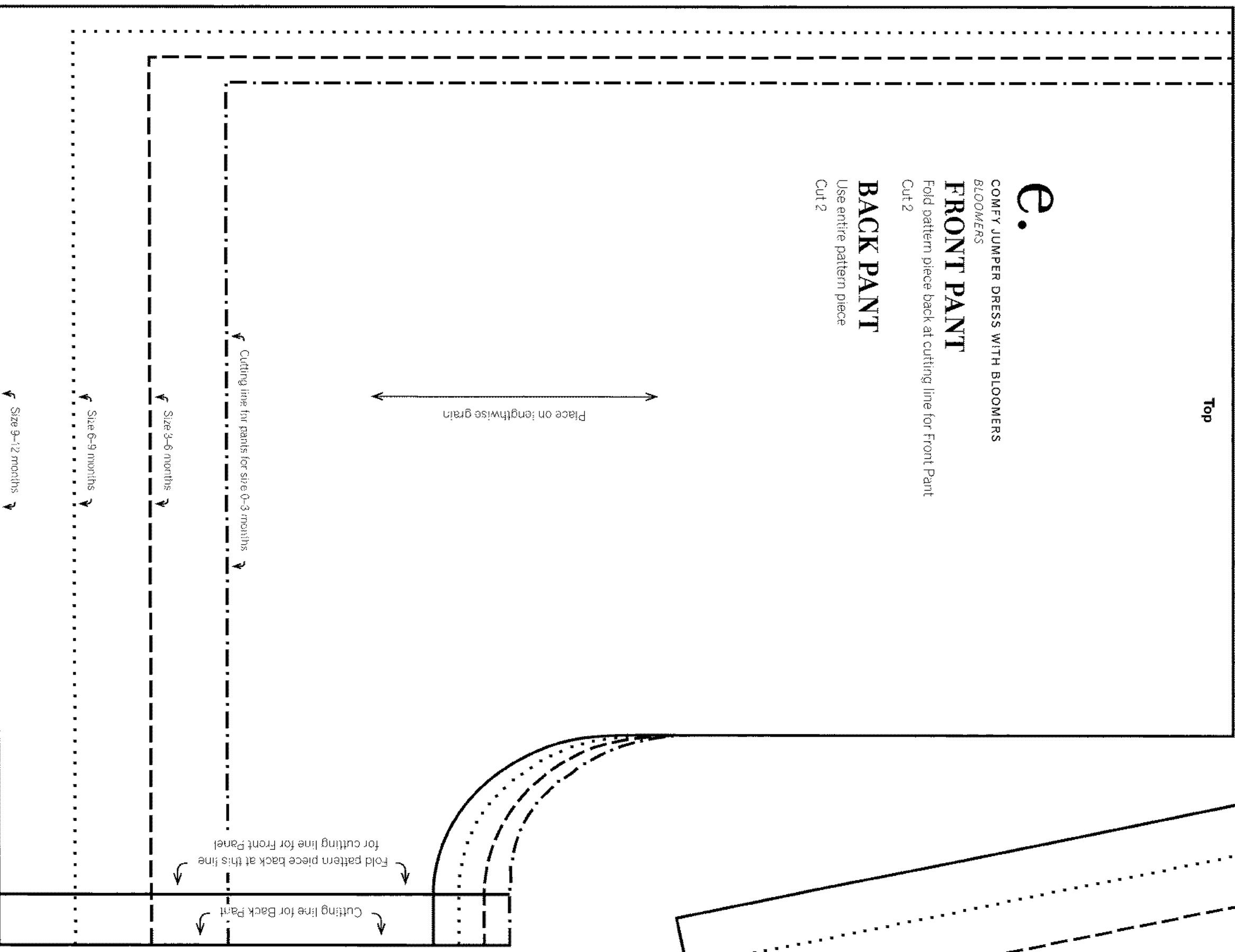
Transfer line for 1 1/4" spot placement

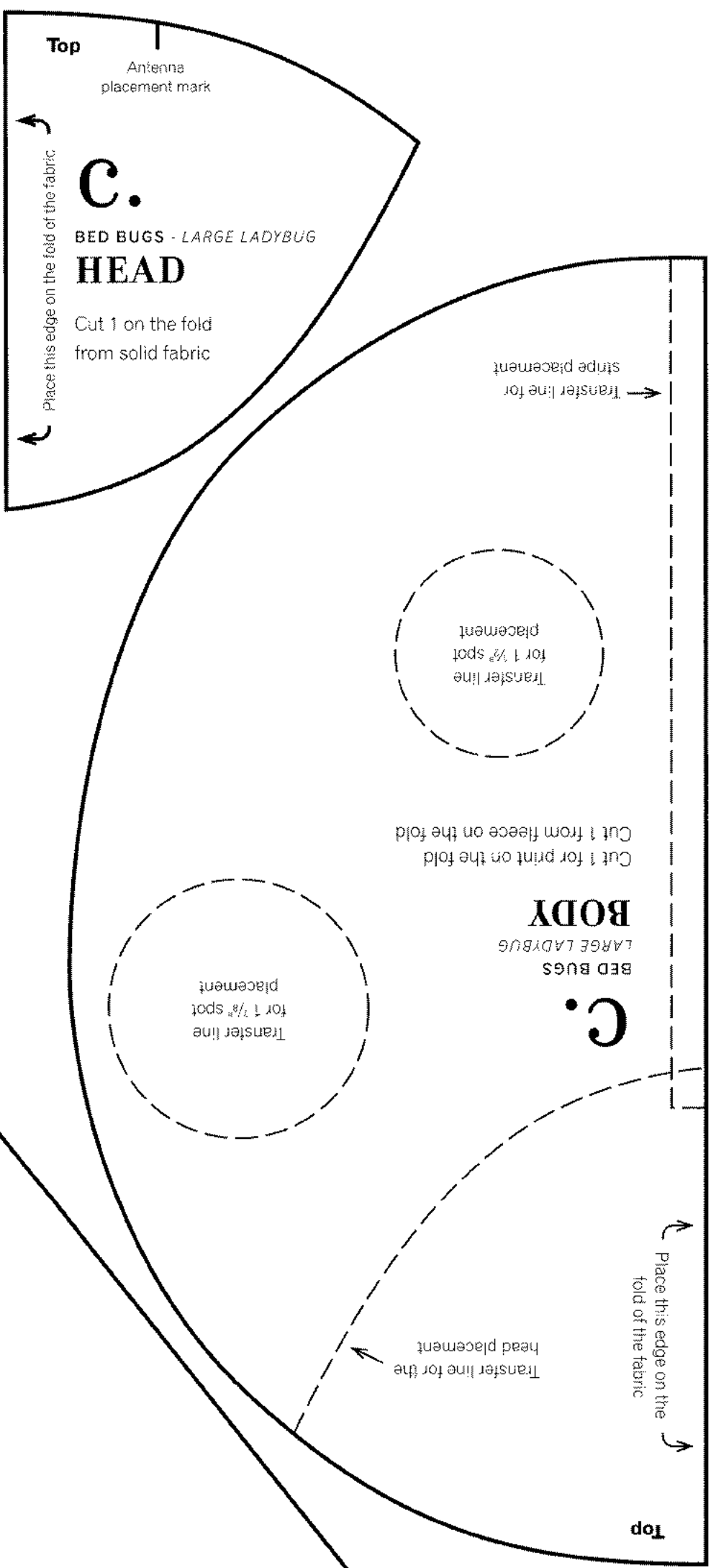
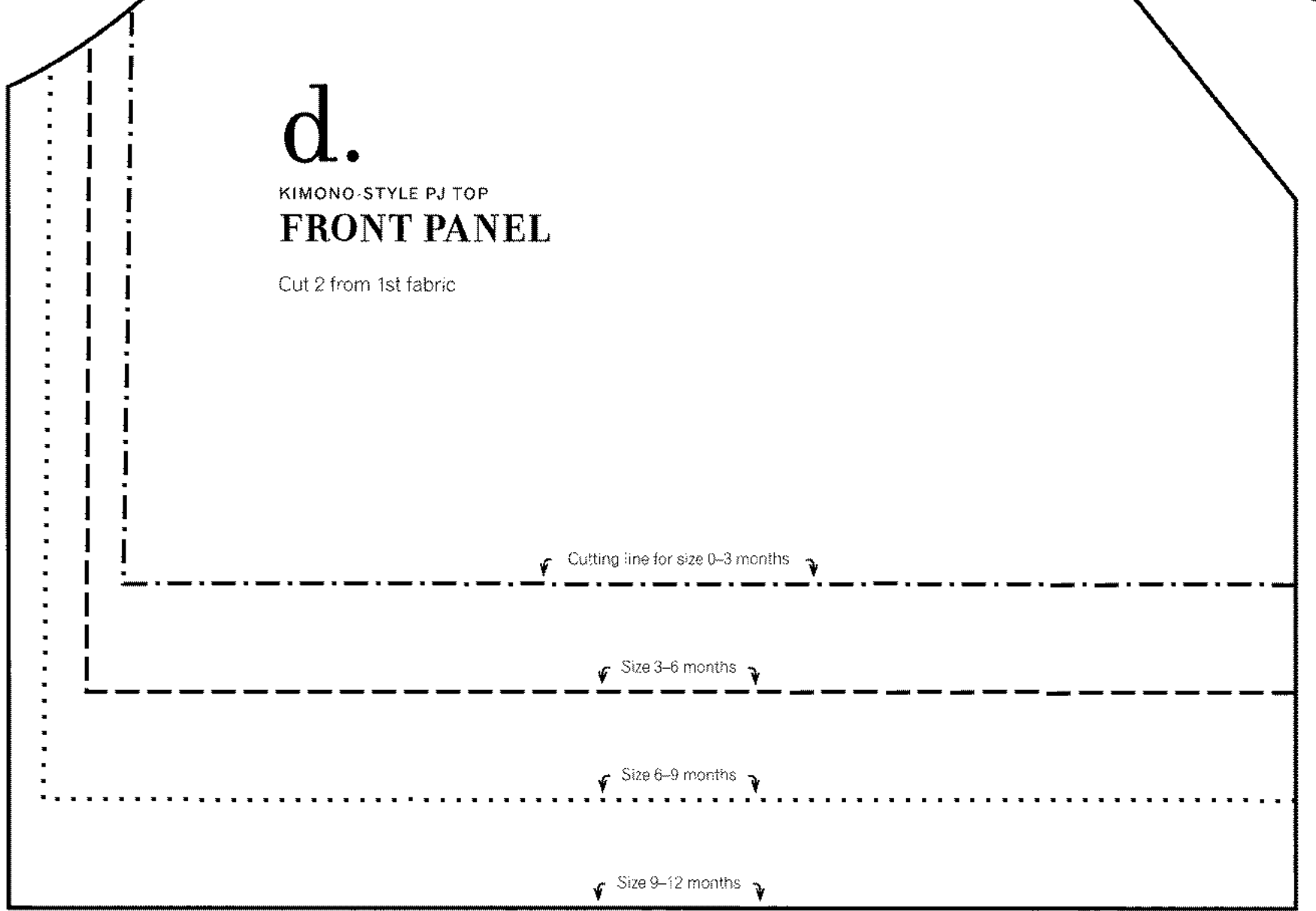
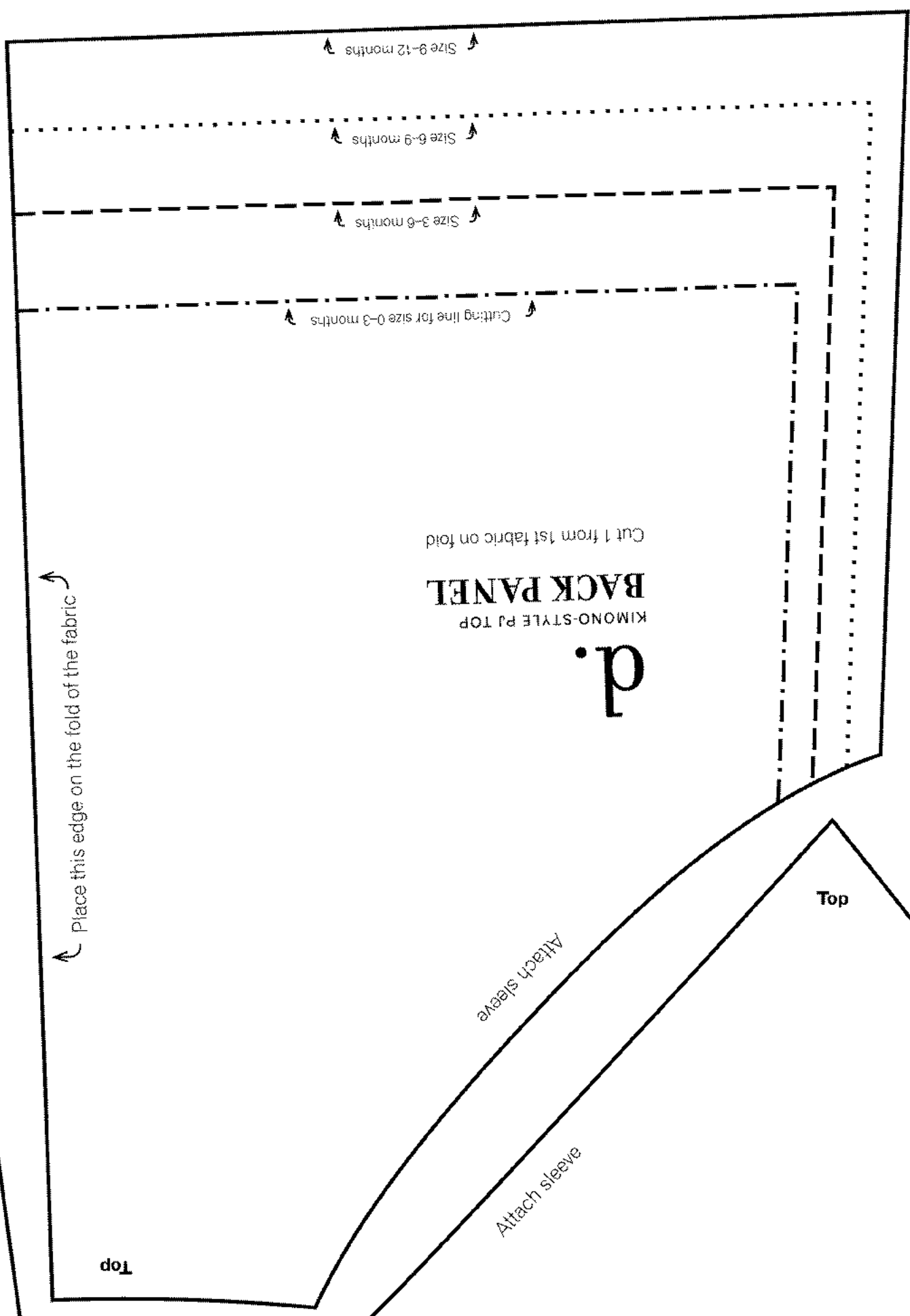
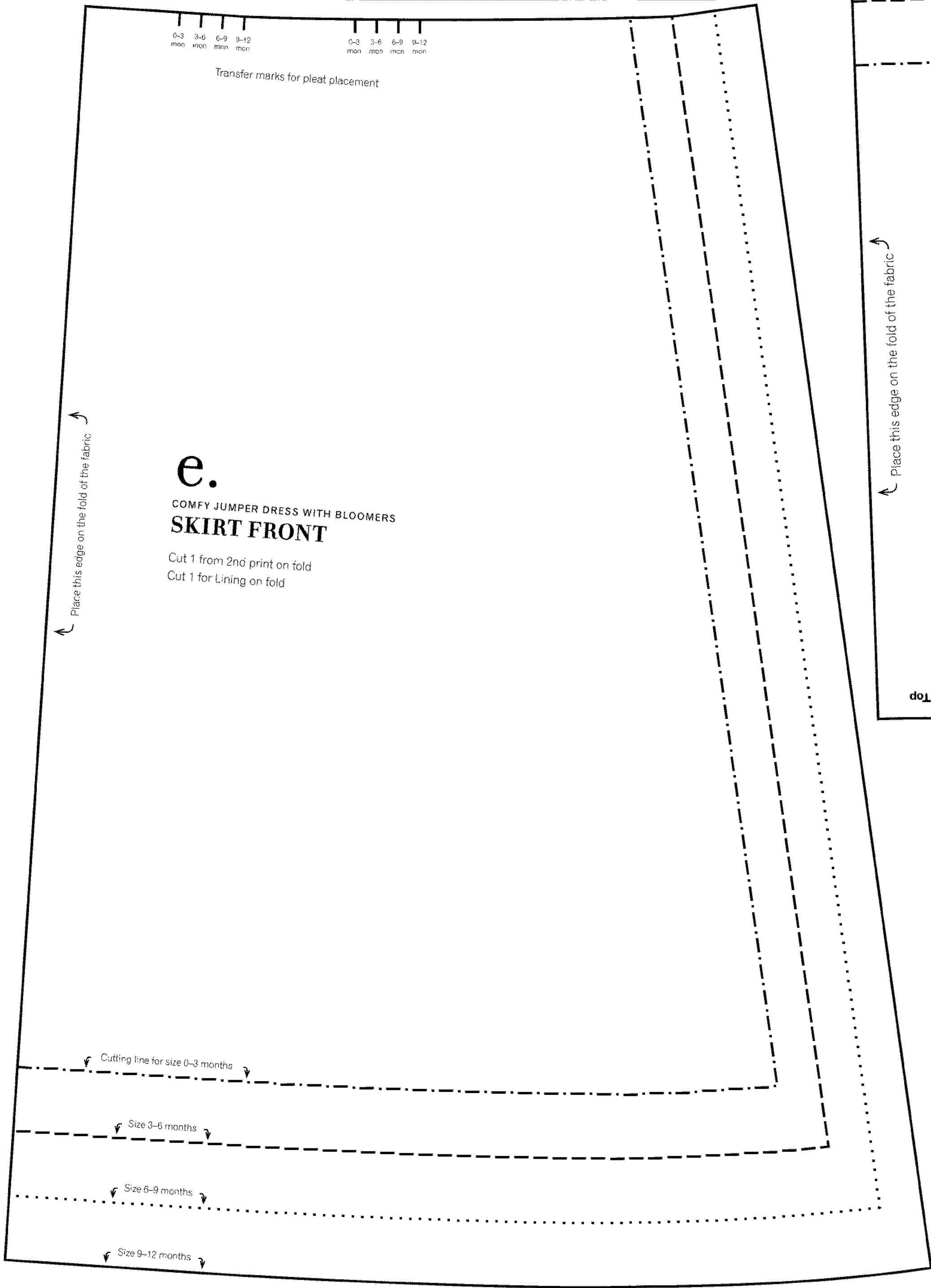
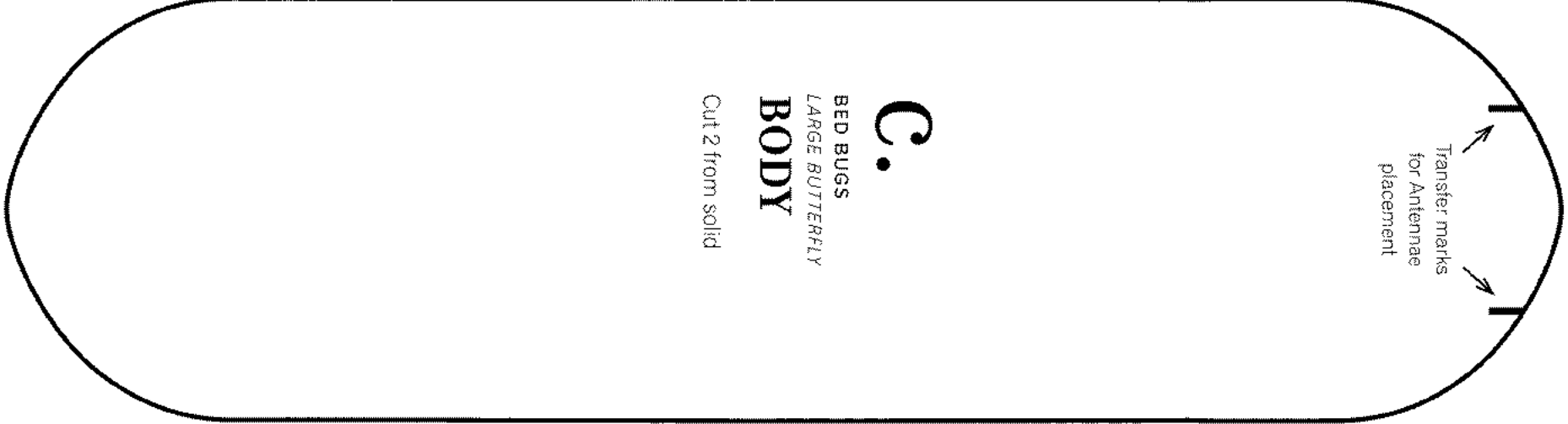


- For 1st Front Panel transfer solid swirl
- For 2nd Front Panel flip pattern piece over, transfer solid swirl
- For 1st Back Panel transfer dashed lines for Velcro placement
- For 2nd Back Panel flip pattern piece over, transfer dashed lines for Velcro placement



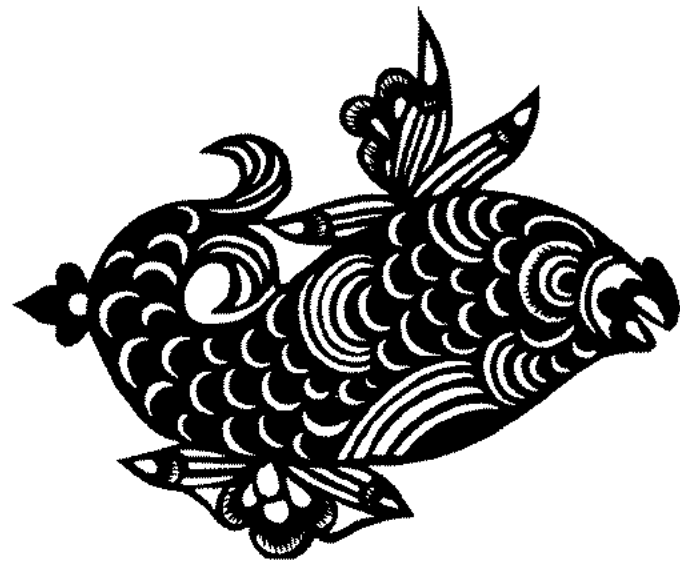
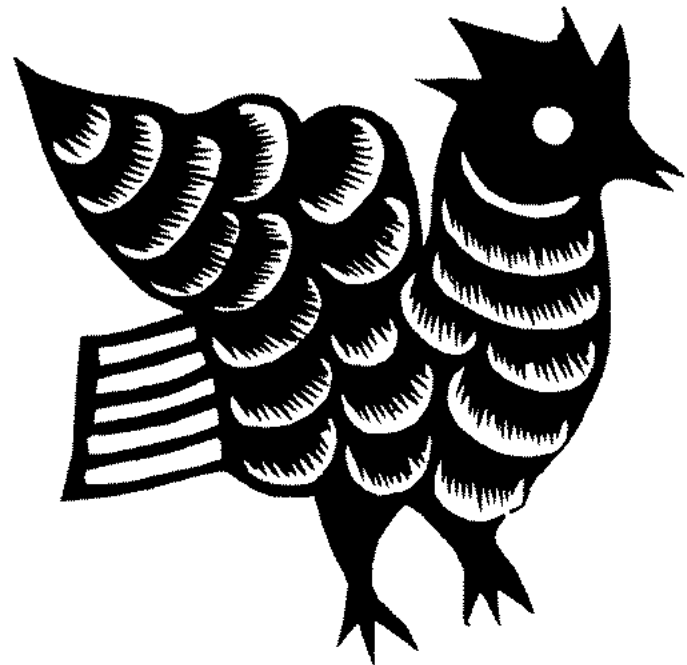
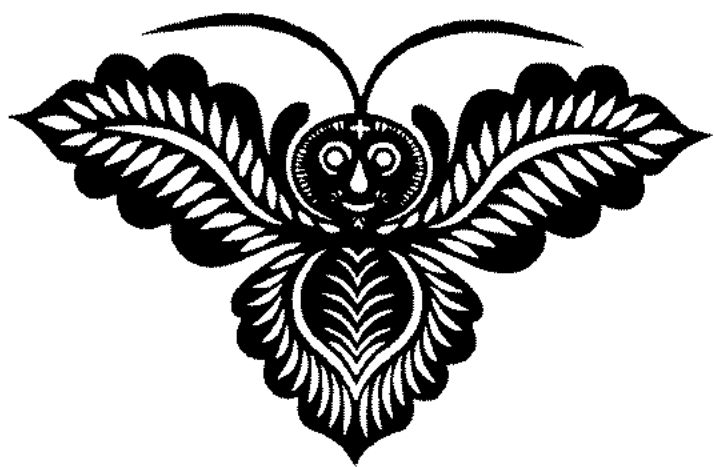
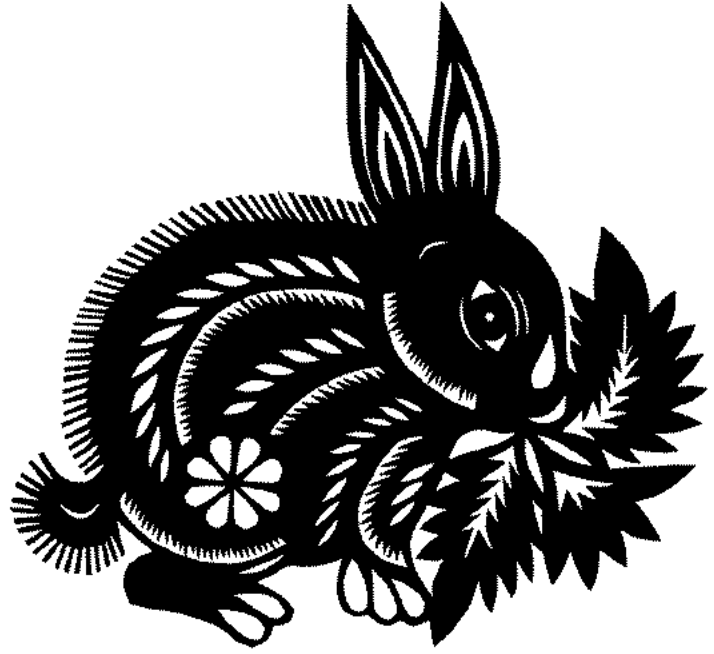
m.
CHEEKY MONKEY LAUNDRY BAG
BODY
Place pattern piece Right side down on Wonder-Under® backing
Trace - Cut 1





p.

IMAGINATION BOOK
IMAGES



r.

BUILDING BLOCKS WITH TAKE-ALONG BAG
ALPHABET

ABCDEFGHIJKLMNOPQRSTUVWXYZ

t.

ALL IN THE FAMILY PHOTO ALBUM
IMAGE

My Family