



amy butler's
style stitches

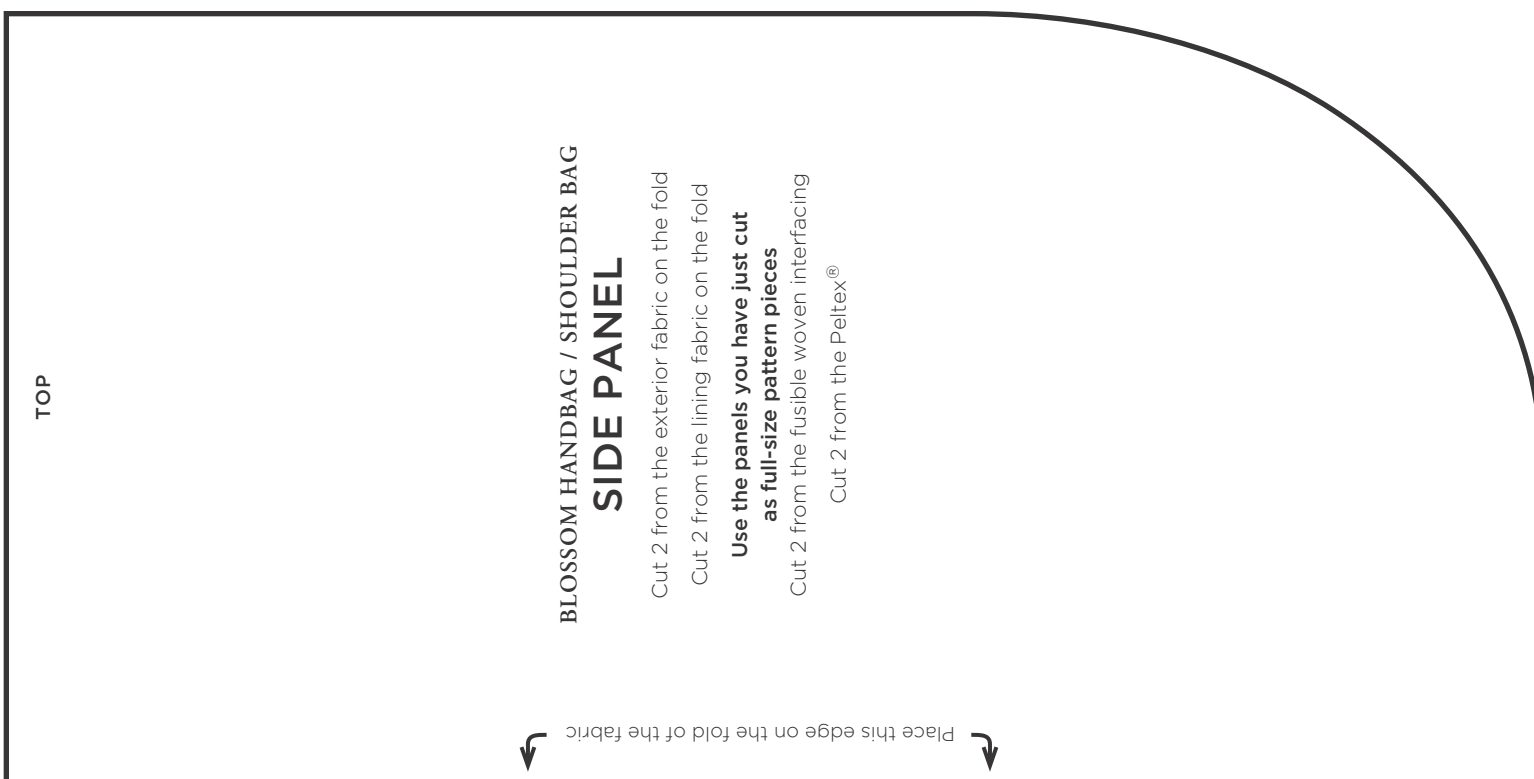
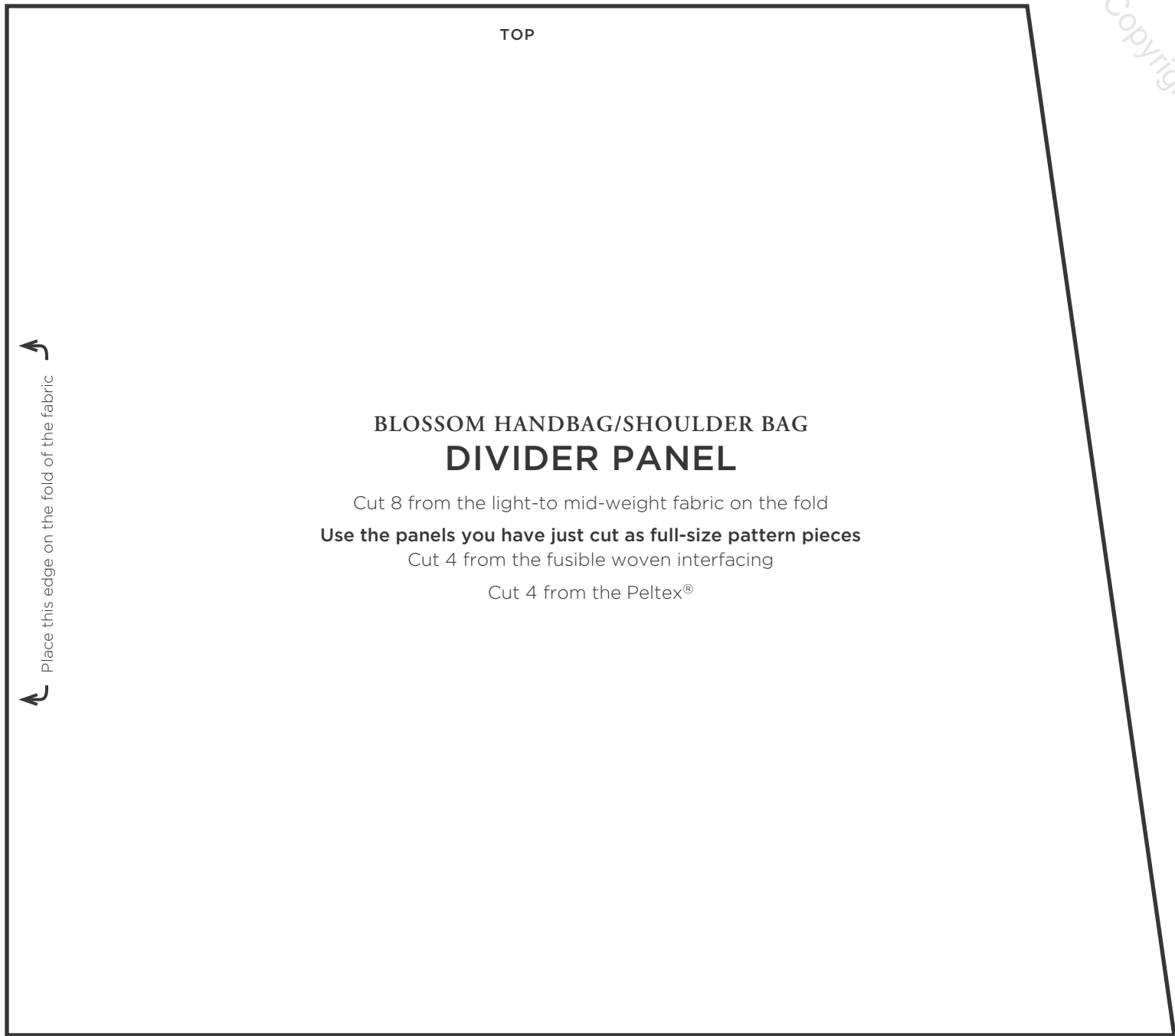
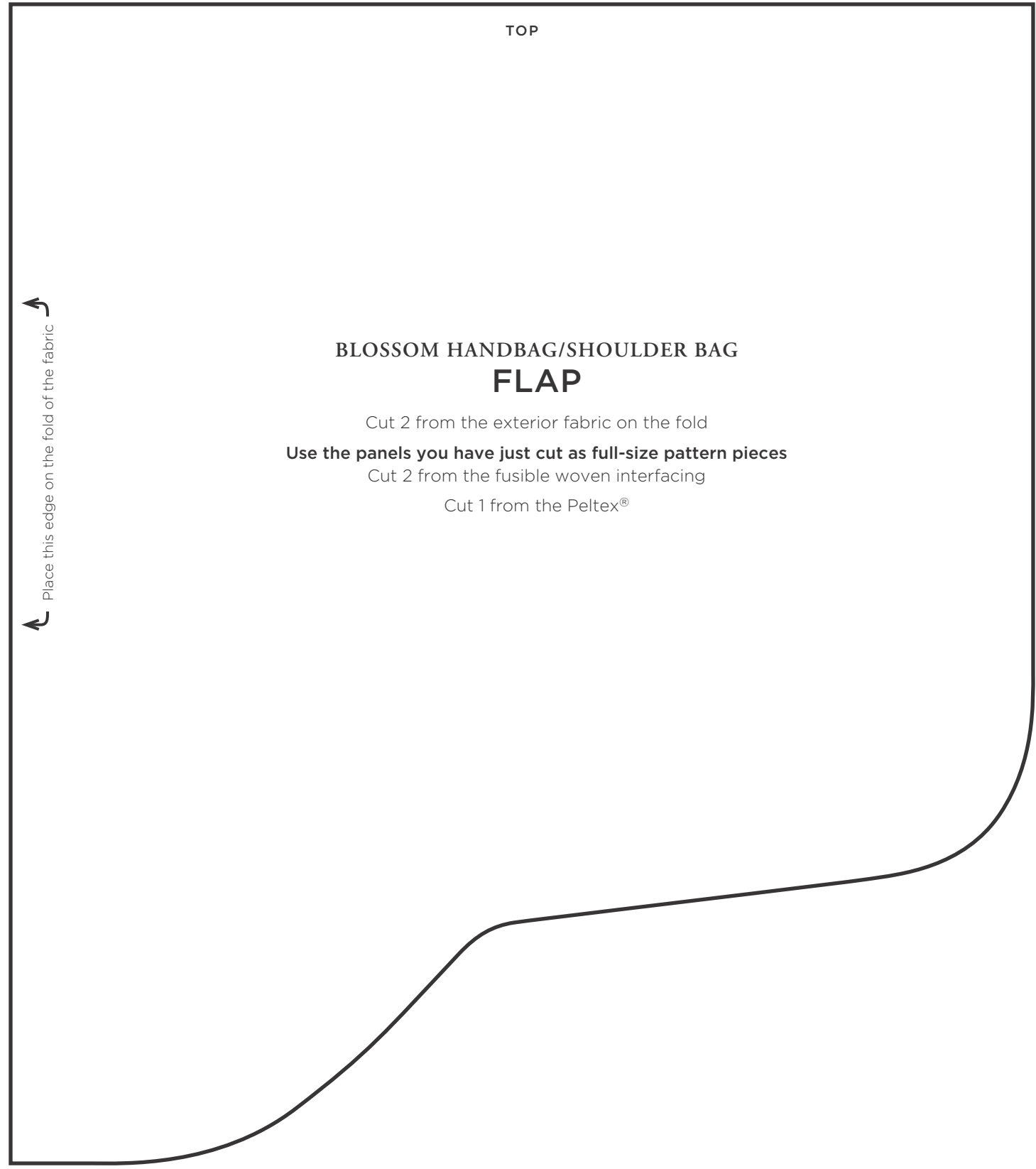
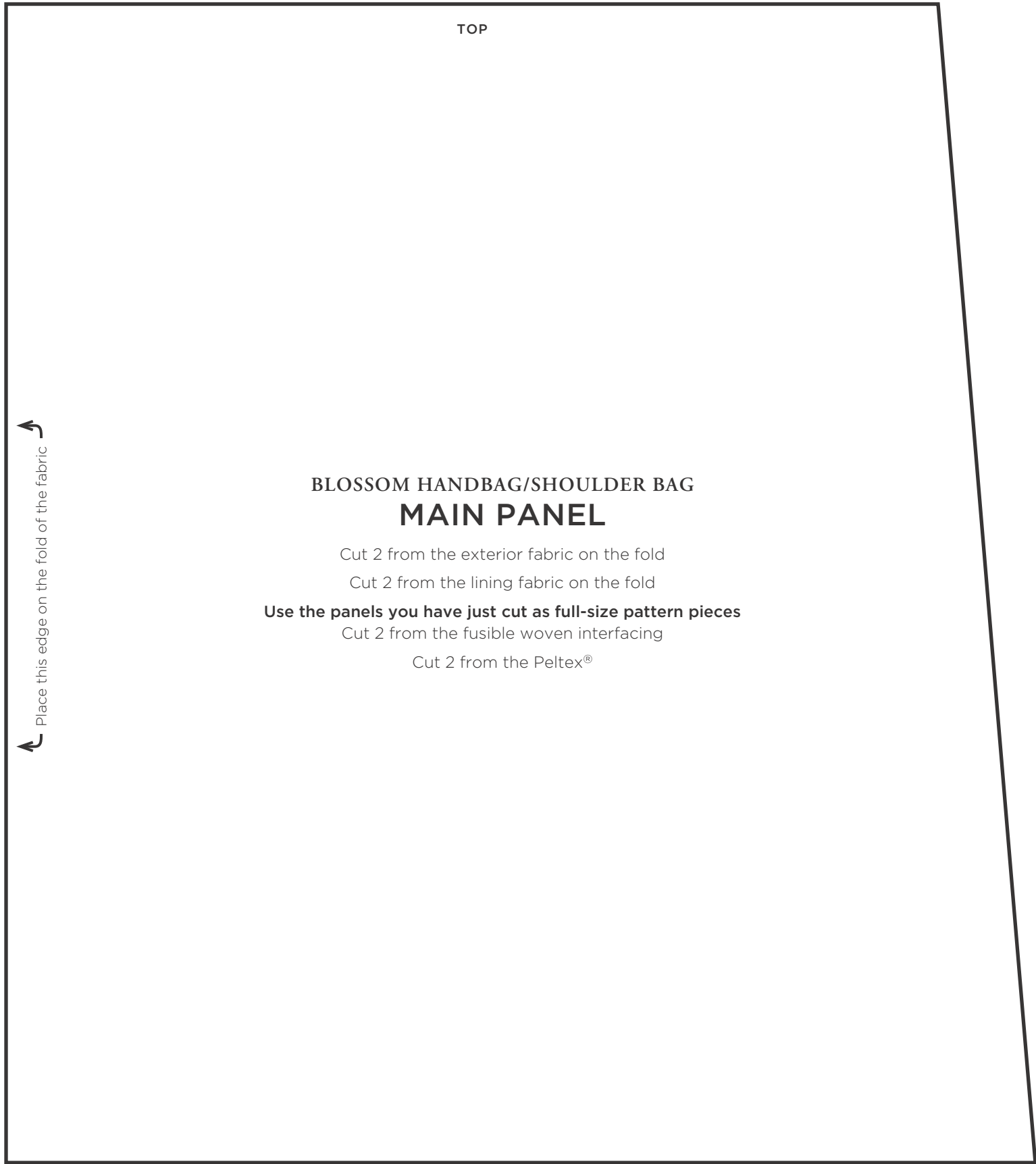
12 easy ways to 26 wonderful bags!

photographs by david butler

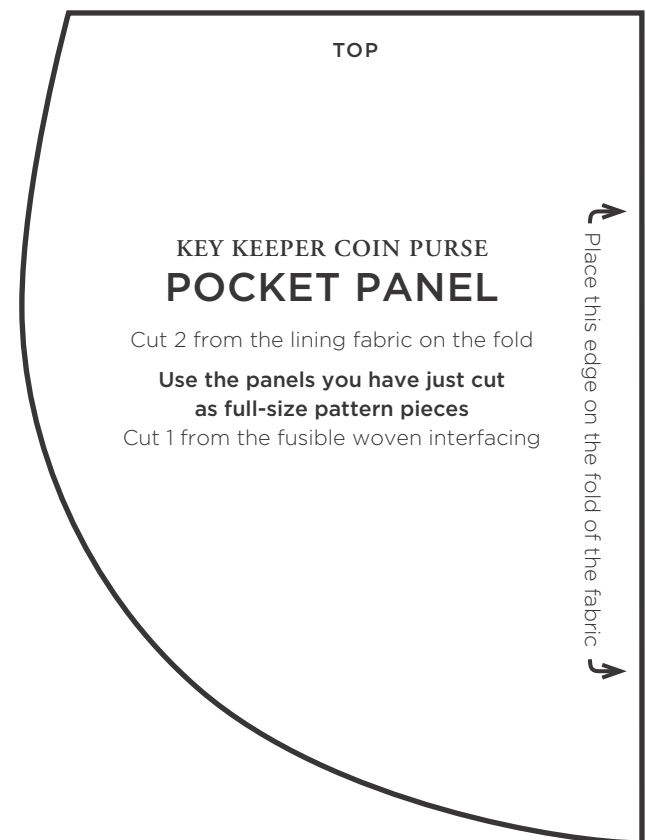
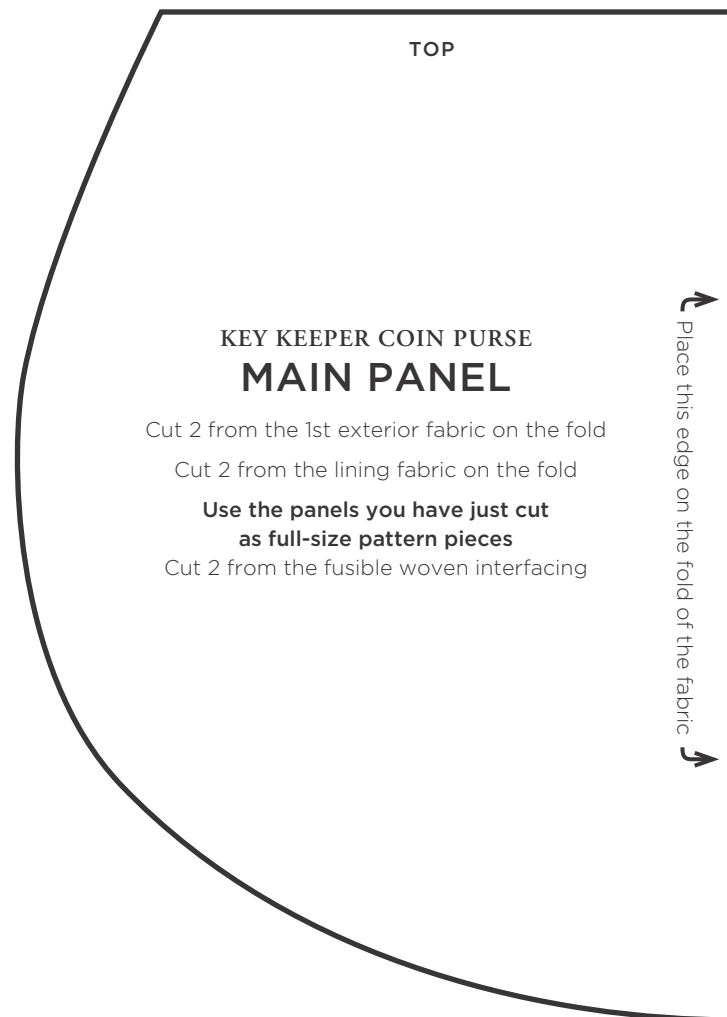
To print patterns on 8 ½-x-11-inch/A4 paper from your home computer, please follow the following “tiling” instructions. Tiling will allow you to split the large pattern page seen on screen across multiple 8 ½-x-11-inch pages, which you can then assemble into the large pattern page to use for your project. Alternatively, you can make use of a large-format printer at your local copy center.

For best printing results, print from Adobe Reader version X or higher. (Tiling options are not available on version 9 or lower.)

1. Open PDF and resave PDF onto your computer.
2. Open resaved PDF and choose Print.
3. Under Paper Size and Handling menu, choose Poster.
4. Select Cut Marks and Tile only large pages and Labels options.
5. Press OK to print.
6. Use the cut marks to line up the pages and tape together to assemble into large pattern page.



Copyright © 2010 by Amy Butler



TOP

Place this edge on the fold of the fabric

COSMO BAG SIDE PANEL

Cut 2 from the exterior fabric on the fold
Cut 2 from the lining fabric on the fold
Use the panels you have just cut as full-size pattern pieces
Cut 4 from the fusible woven interfacing

Place this edge on the fold of the fabric

BEAUTIFUL BALANCE CHECKBOOK COVER FLAP
Cut 2 from the coordinating solid fabric on the fold
Use the panels you have just cut as full-size pattern pieces
Cut 2 from the fusible woven interfacing
Cut 1 from the fusible fleece

TOP

TOP

Fold the pattern piece back at this line for the cutting line for the short handle

Place this line on the lengthwise grain of the fabric

COSMO BAG HANDLE (For either size handle)

Cut 8 from the solid exterior fabric
Cut 8 from the fusible woven interfacing

TOP

Fold the pattern piece back at this line for the cutting line for the side pocket panel

COSMO BAG SIDE POCKET/ SIDE POCKET LINING PANEL

FOR SIDE POCKET PANEL
(Fold the pattern piece back at the dashed line)
Cut 2 from the exterior fabric on the fold

Use the panels you have just cut as full-size pattern pieces
Cut 2 from the fusible woven interfacing

FOR SIDE POCKET LINING PANEL
(Use entire pattern piece)
Cut 2 from the solid exterior fabric on the fold

Use the panels you have just cut as full-size pattern pieces
Cut 2 from the fusible woven interfacing

Place this edge on the fold of the fabric

Copyright © 2013 by Amy Butler

TOP

COSMO BAG BAND

Place this edge on the fold of the fabric

Cut 2 from the solid exterior fabric on the fold
Use the panels you have just cut as full-size pattern pieces
Cut 2 from the fusible woven interfacing

TOP

COSMO BAG LINING/INSIDE POCKET PANEL

FOR LINING PANEL
(Use entire pattern piece)

Cut 2 from the lining fabric on the fold

Use the panels you have just cut as full-size pattern pieces
Cut 2 from the fusible woven interfacing

FOR INSIDE POCKET PANEL

(Fold the pattern piece back at the dashed line)

Cut 4 from the lining fabric on the fold

Use the panels you have just cut as full-size pattern pieces
Cut 2 from the fusible woven interfacing

Place this edge on the fold of the fabric

Fold the pattern piece back at this line for the cutting line for the inside pocket panel

TOP

LARGE EVERYTHING WRISTLET FLAP

Cut 2 from the exterior fabric on the fold
Use the panels you have just cut as full-size pattern pieces
Cut 2 from the fusible woven interfacing
Cut 1 from the Peltex®

Place this edge on the fold of the fabric

Place this edge on the fold of the fabric

Fold the pattern piece back at this line for the cutting line for the pocket panel. Place this edge on the folded edge of the fabric

Fold the pattern piece back at this line for the cutting line for the pocket panel

LARGE TEARDROP BAG MAIN/POCKET PANEL

**FOR MAIN PANEL
(USE ENTIRE PATTERN PIECE)**
Cut 2 from the 1st exterior fabric on the fold
Cut 2 from the lining fabric on the fold
Use the panels you have just cut as full-size pattern pieces
Cut 2 from the fusible woven interfacing

**FOR POCKET PANEL
(FOLD THE PATTERN PIECE BACK AT BOTH DASHED LINES)**
Cut 2 from the lining fabric on the fold
Use the panels you have just cut as full-size pattern pieces
Cut 1 from the fusible woven interfacing

TOP

TOP

Pleat marks

Copyright © 2010 by Amy Butler

Place this edge on the fold of the fabric

PERFECTLY PLEATED CLUTCH HANDLE

Cut 2 from the coordinating fabric on the fold
Use one handle you have just cut as a full-size pattern piece
Cut 1 from the fusible woven interfacing

COSMO BAG MAIN PANEL

Cut 2 from the exterior fabric on the fold
Use the panels you have just cut as full-size pattern pieces
Cut 2 from the fusible woven interfacing

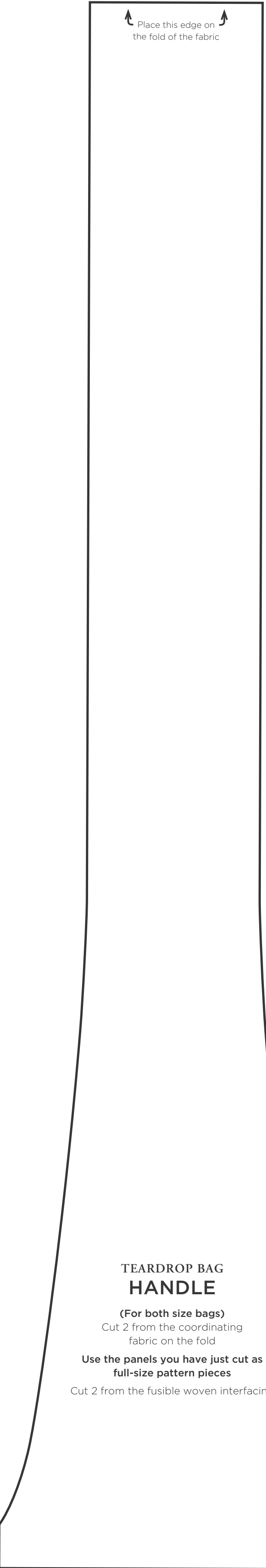
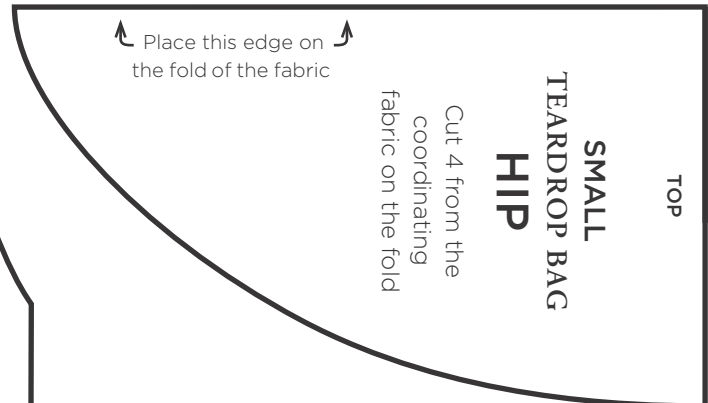
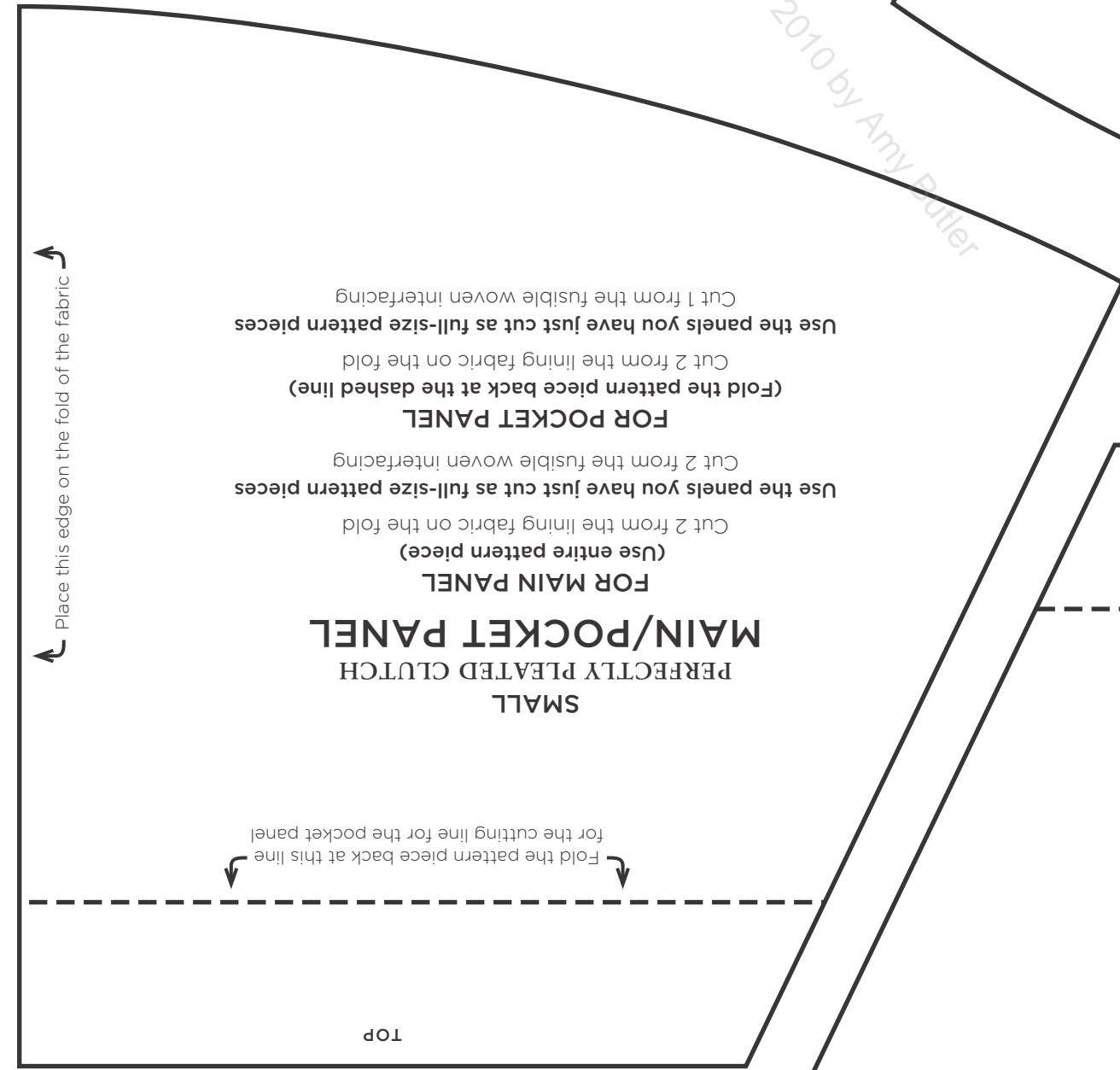
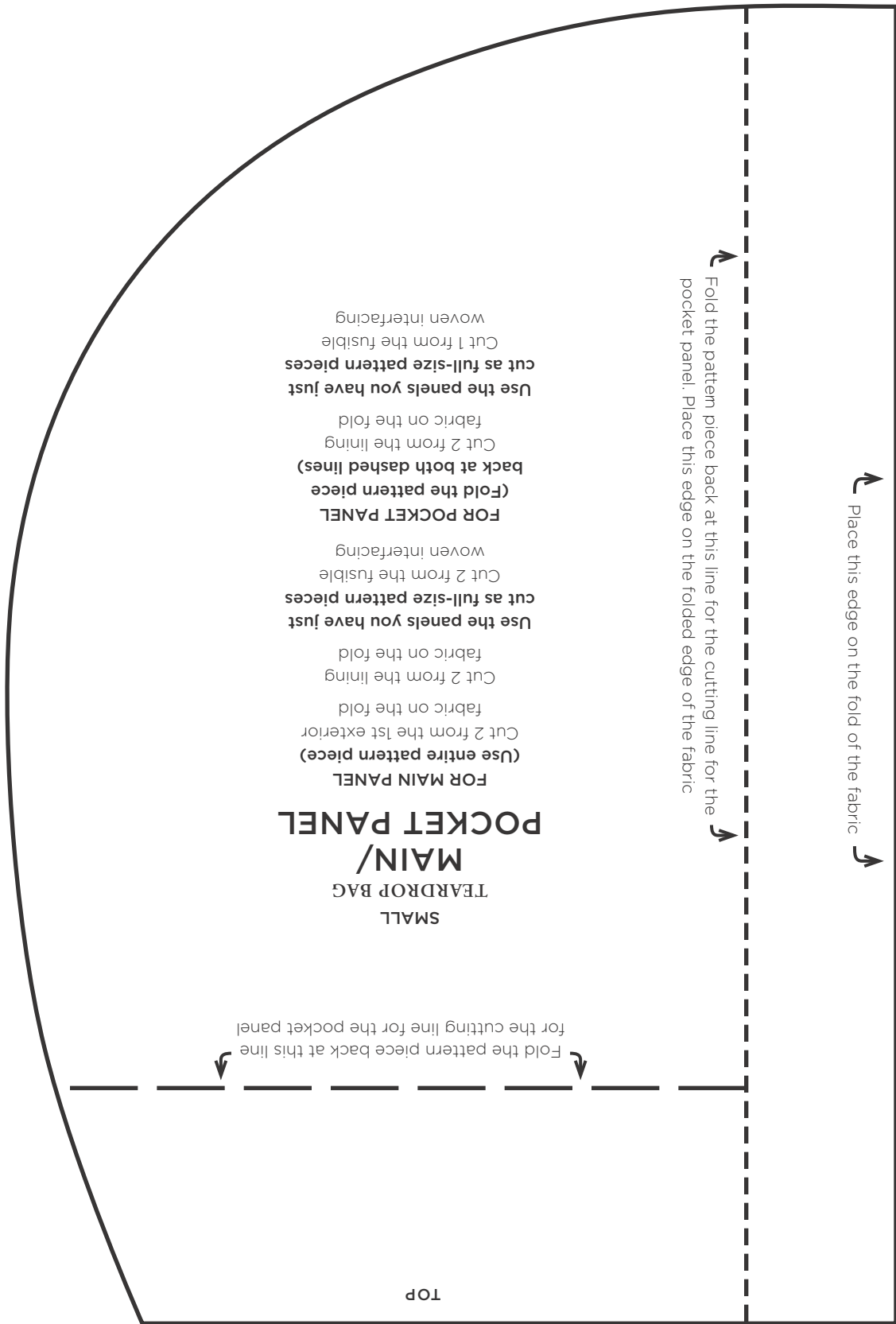
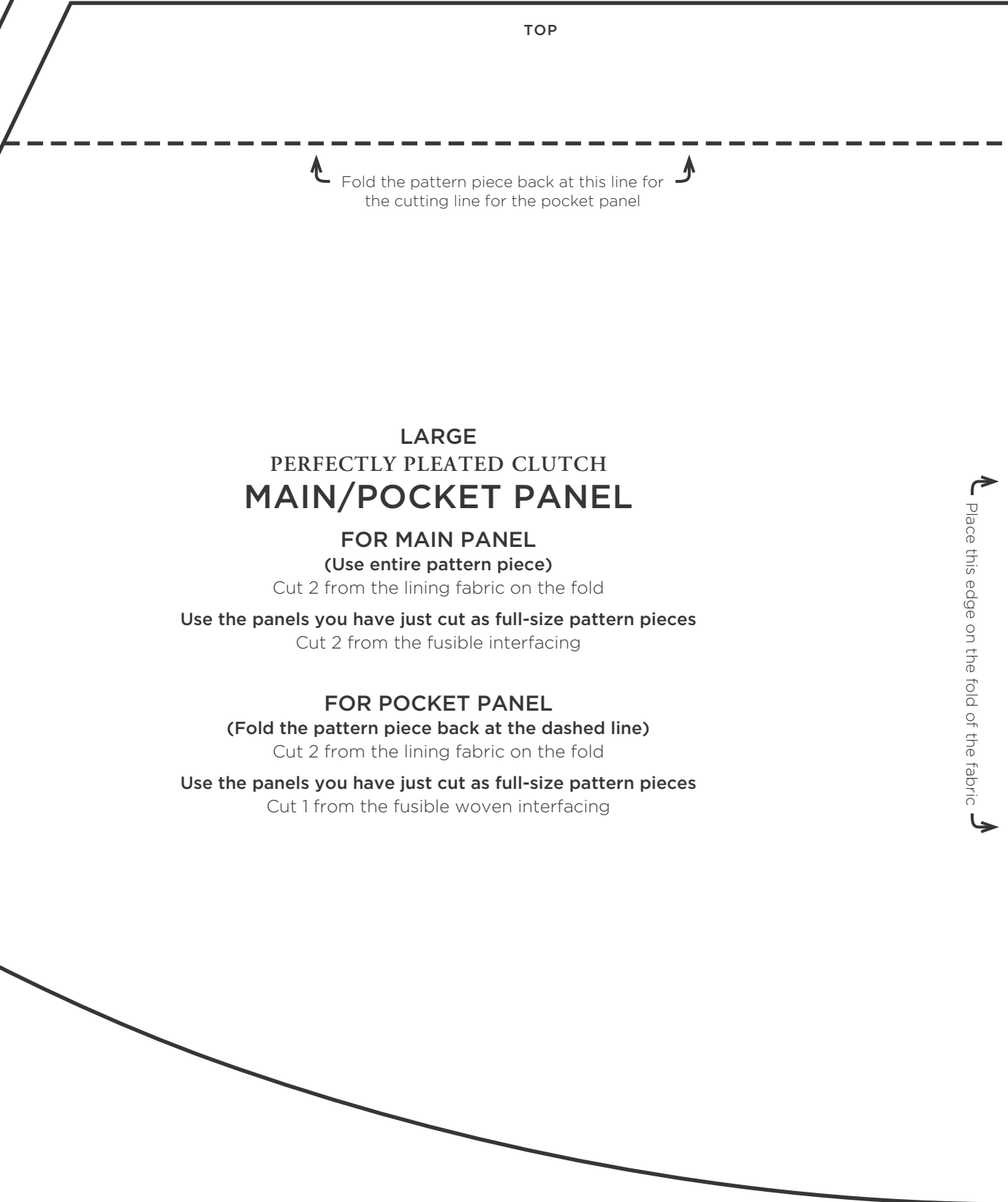
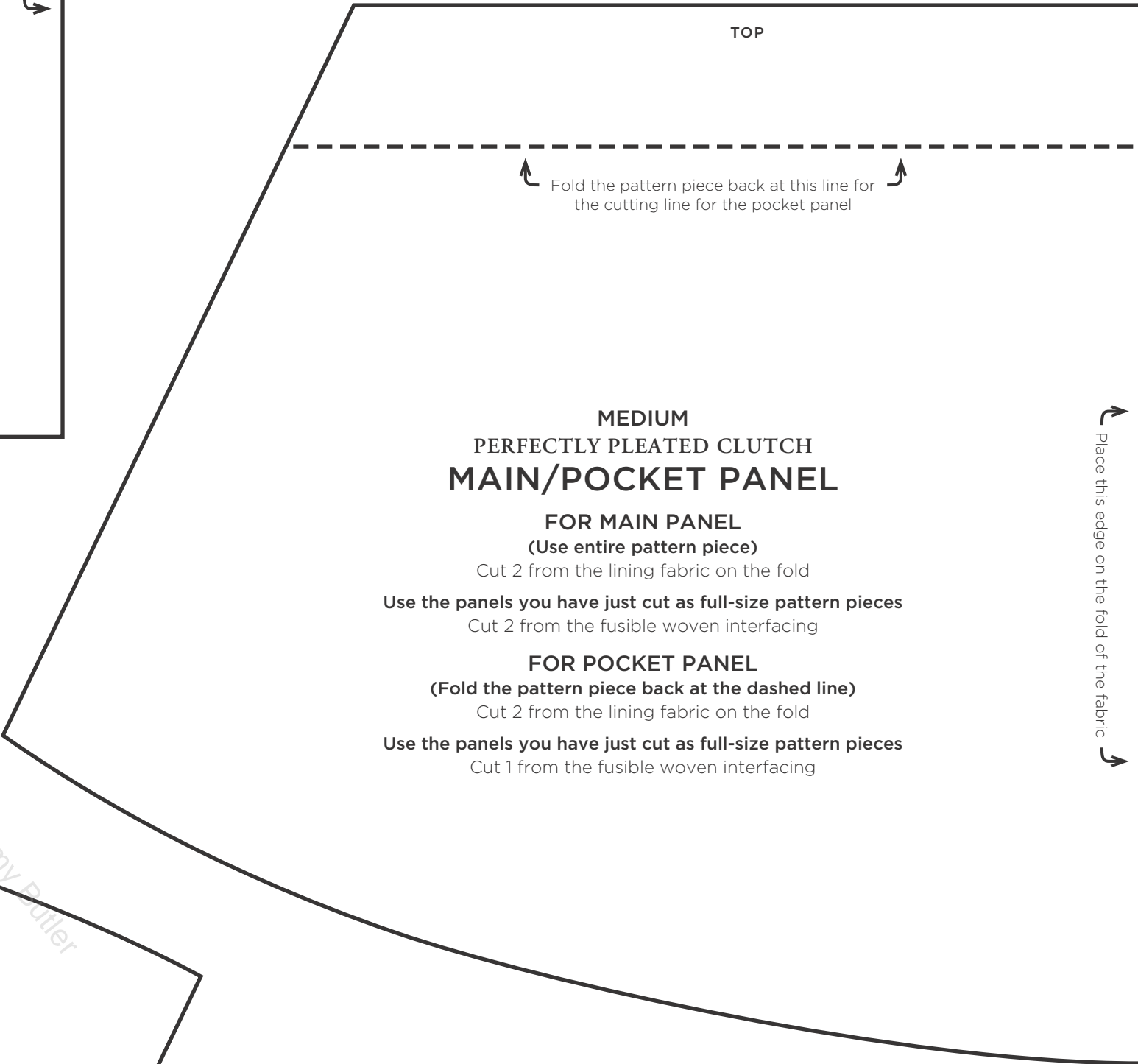
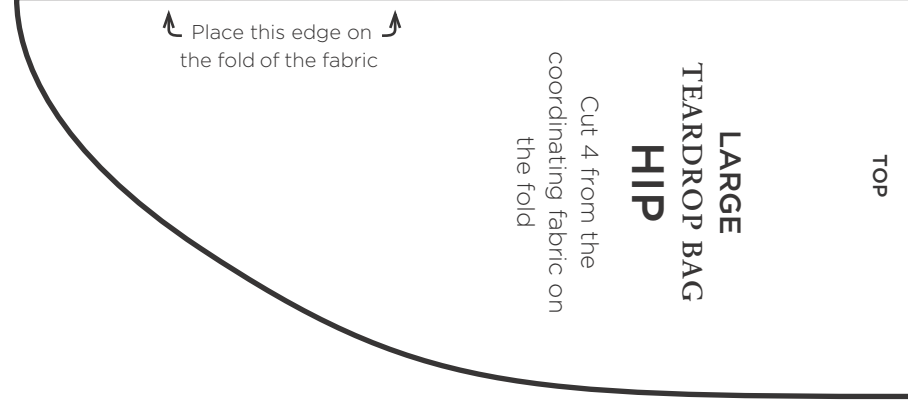
Place this edge on the fold of the fabric

TOP

SMALL EVERYTHING WRISTLET FLAP

Cut 2 from the exterior fabric on the fold
Use the panels you have just cut as full-size pattern pieces
Cut 2 from the fusible woven interfacing
Cut 1 from the Peltex®

Place this edge on the fold of the fabric



Copyright © 2010 by Amy Butler



TOP

TOP

Place this edge on the fold of the fabric ↺

**SMALL
FRINGED HOBO BAG
INSIDE POCKET PANEL**

Cut 4 from the lining fabric on the fold
**Use the panels you have just cut
as full-size pattern pieces**
If using light- to mid-weight fabric
Cut 4 from the fusible woven interfacing
If using mid-weight Home Dec fabric
Cut 2 from the fusible woven interfacing

Copyright © 2010 by Amy Butler

**LARGE
FRINGED HOBO BAG
MAIN PANEL**

Cut 2 from the exterior fabric on the fold
Cut 2 from the lining fabric on the fold

Use the panels you have just cut as full-size pattern pieces

Cut 4 from the fusible woven interfacing

If using light- to mid-weight fabric
Cut 4 from the fusible fleece

If using mid-weight Home Dec fabric
Cut 2 from the fusible fleece

Place this edge on the fold of the fabric ↺

TOP

Place this edge on the fold of the fabric ↺

**LARGE
FRINGED HOBO BAG
YOKE**

Cut 2 from the coordinating fabric on the fold
**Use the panels you have just cut as
full-size pattern pieces**

Cut 2 from the fusible woven interfacing

TOP

Place this edge on the fold of the fabric

**REVERSIBLE
EVERYDAY SHOPPER
SIDE PANEL**
Cut 2 from the exterior
fabric on the fold
Cut 2 from the coordinating
fabric on the fold
**Use the panels you
have just cut as full-size
pattern pieces**
Cut 4 from the fusible
woven interfacing



**LARGE
FRINGED HOBO BAG
INSIDE POCKET PANEL**
Cut 4 from the lining fabric on the fold
Use the panels you have just cut as full-size pattern pieces
If using light- to mid-weight fabric
Cut 4 from the fusible woven interfacing
If using mid-weight Home Dec fabric
Cut 2 from the fusible woven interfacing

Place this edge on the fold of the fabric

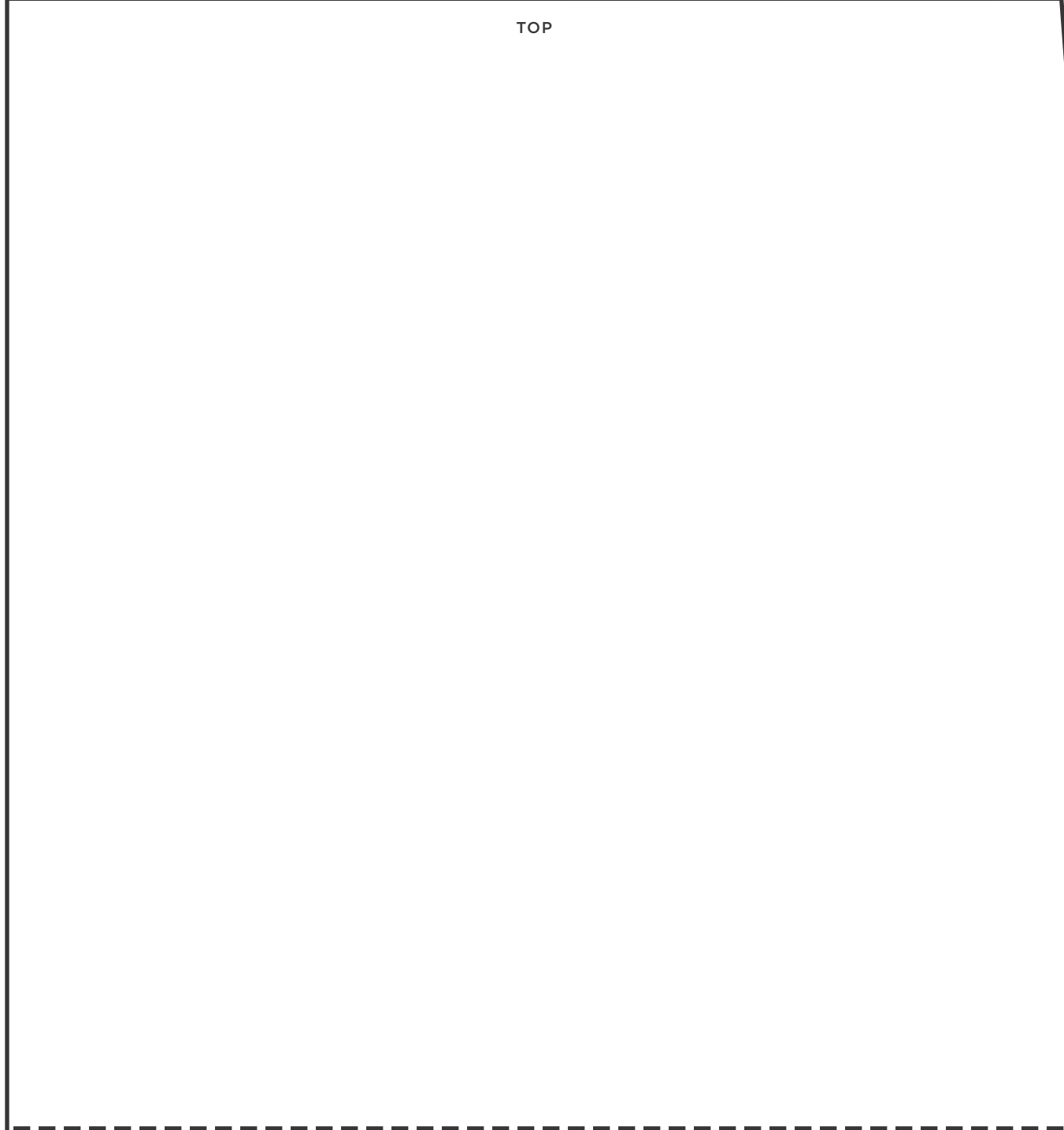
TOP

Copyright © 2010 by Amy Butler

TOP

**SMALL
FRINGED HOBO BAG
MAIN PANEL**
Cut 2 from the exterior fabric on the fold
Cut 2 from the lining fabric on the fold
Use the panels you have just cut
as full-size pattern pieces
Cut 4 from the fusible woven interfacing
If using light- to mid-weight fabric
Cut 4 from the fusible fleece
If using mid-weight Home Dec fabric
Cut 2 from the fusible fleece

Place this edge on the fold of the fabric



TOP

Fold the pattern piece back at this line for the cutting line for the pocket panel

**REVERSIBLE EVERYDAY SHOPPER
MAIN/POCKET PANEL**

**FOR MAIN PANEL
(Use entire pattern piece)**

Cut 2 from the exterior fabric on the fold
Cut 2 from the coordinating fabric on the fold

Use the panels you have just cut as full-size pattern pieces
Cut 4 from the fusible woven interfacing

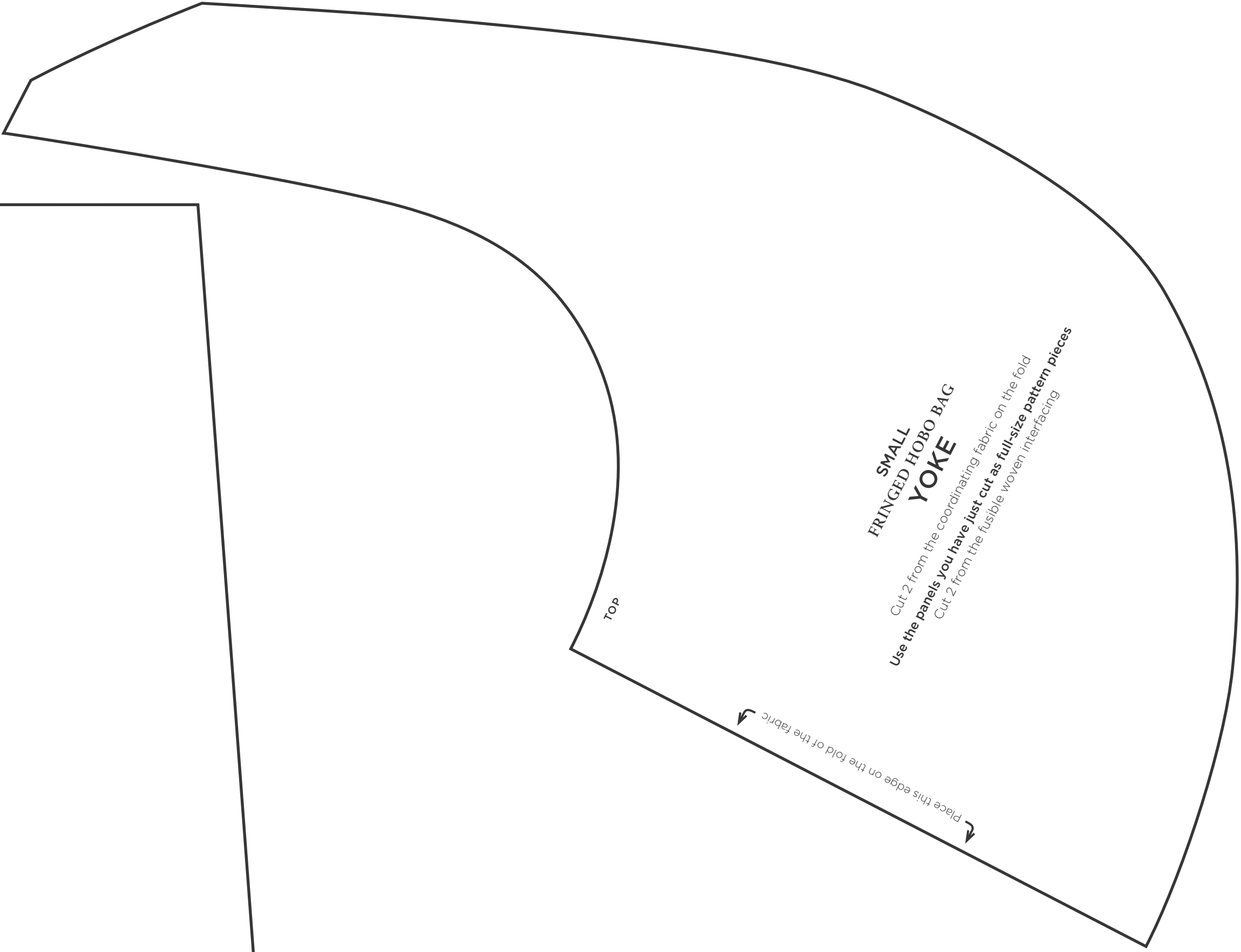
FOR POCKET PANEL

(Fold the pattern piece back at the dashed line)

Cut 4 from the coordinating fabric on the fold

Use the panels you have just cut as full-size pattern pieces
Cut 4 from the fusible woven interfacing

Place this edge on the fold of the fabric

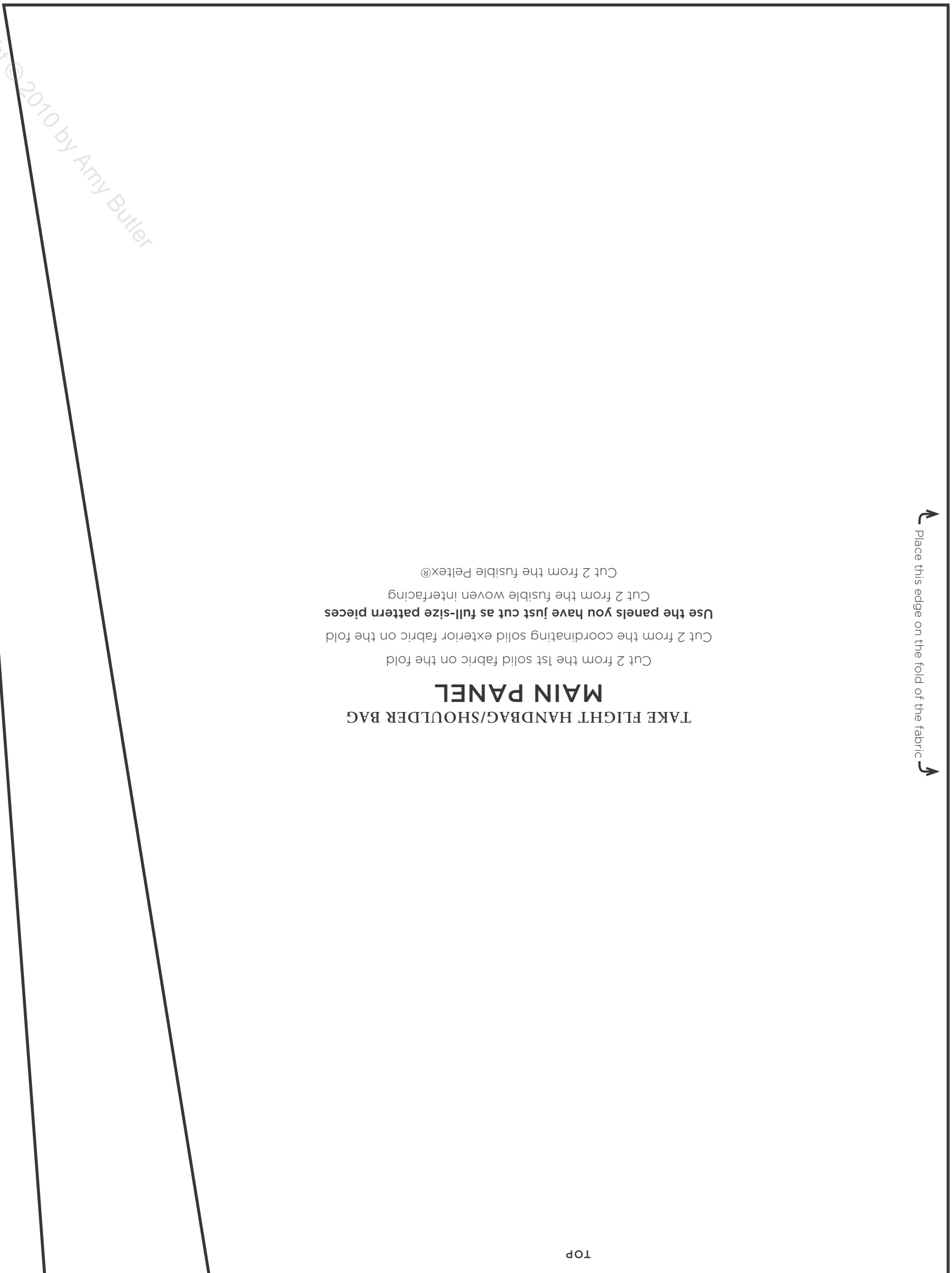


**SMALL
FRINGED HOBO BAG
YOKE**
Use the panels you have just cut as full-size pattern pieces
Cut 2 from the coordinating fabric on the fold
Cut 2 from the fusible woven interfacing

Top

Place this edge on the fold of the fabric

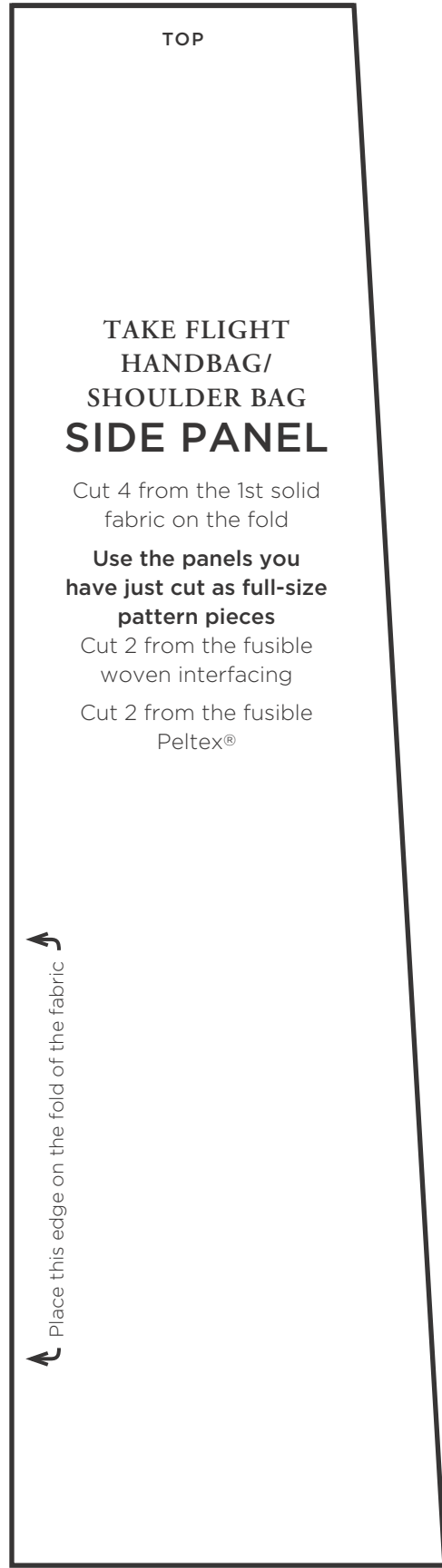
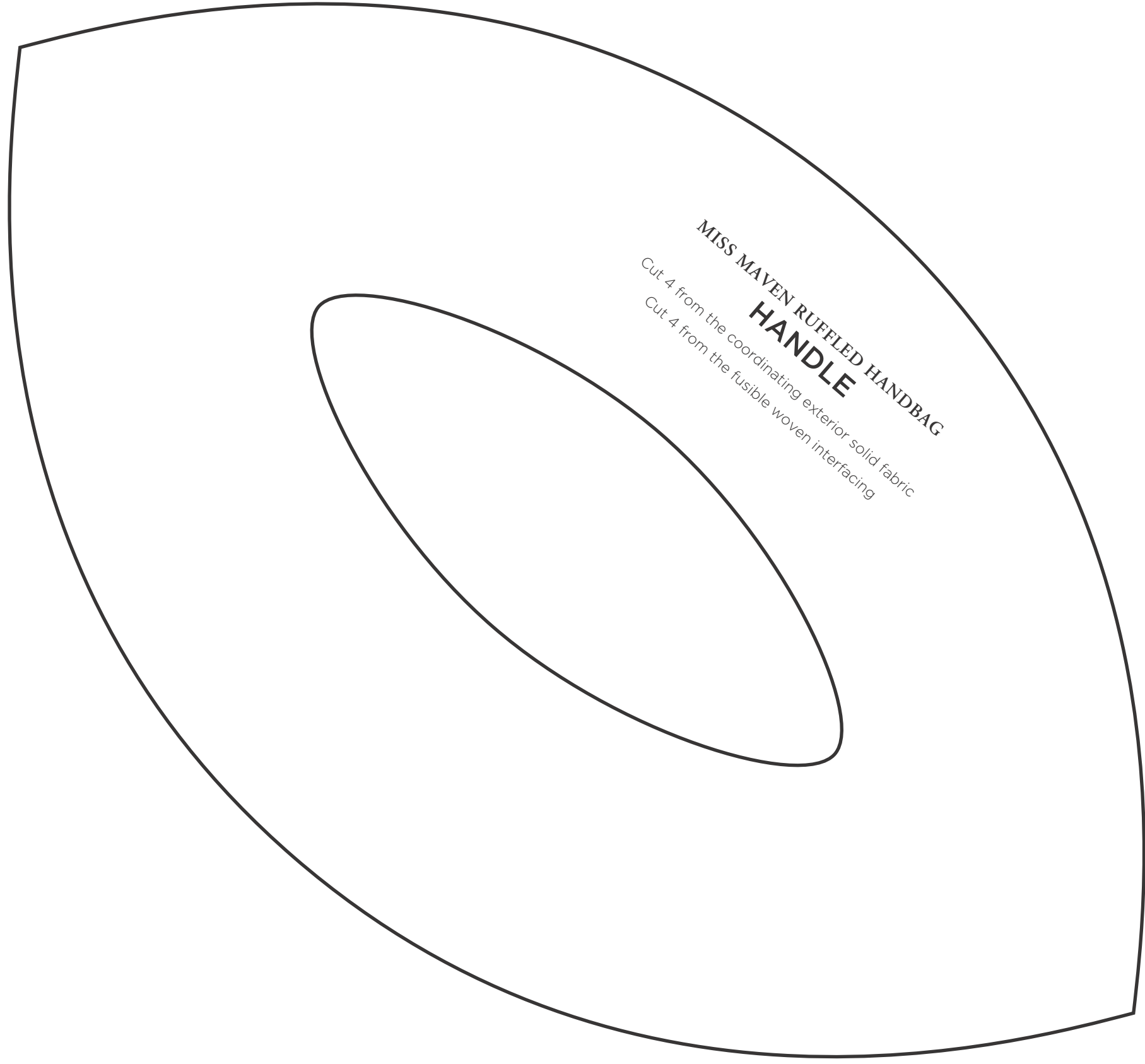
Copyright © 2010 by Amy Butler



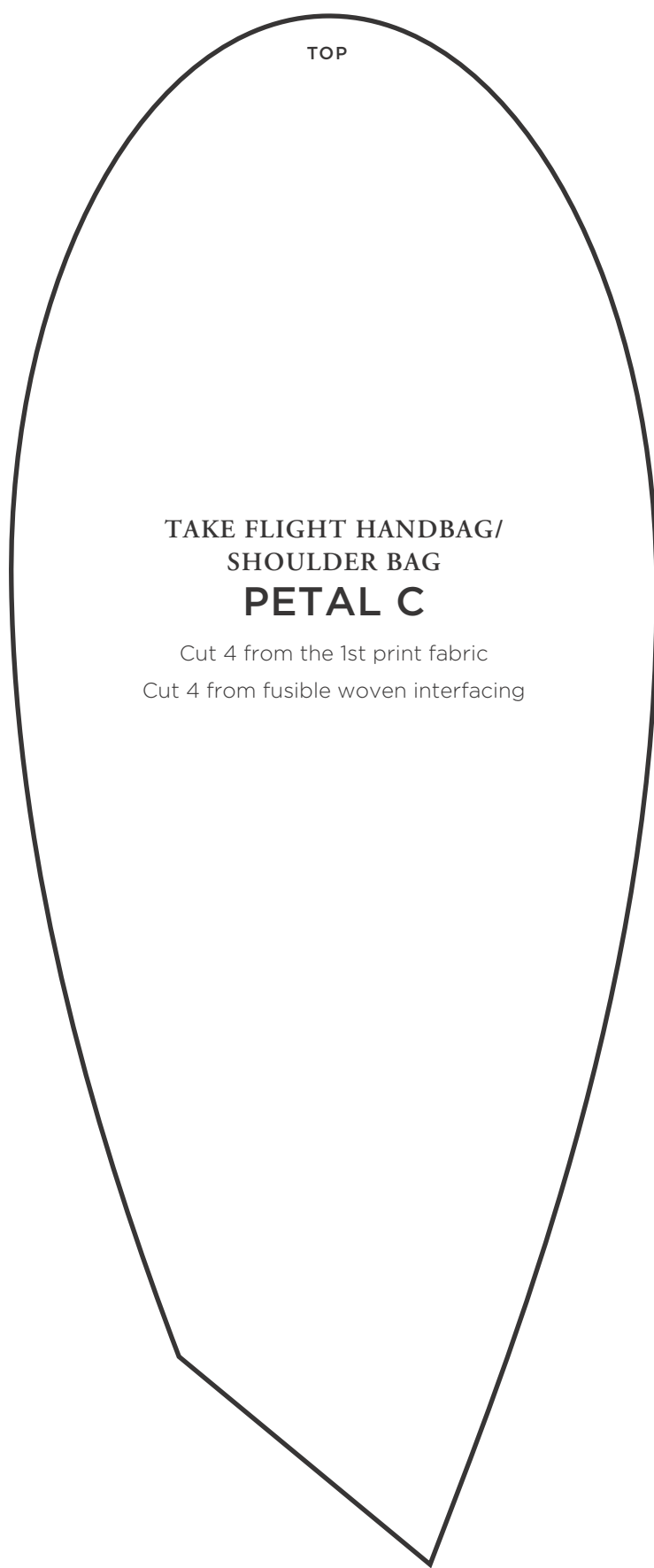
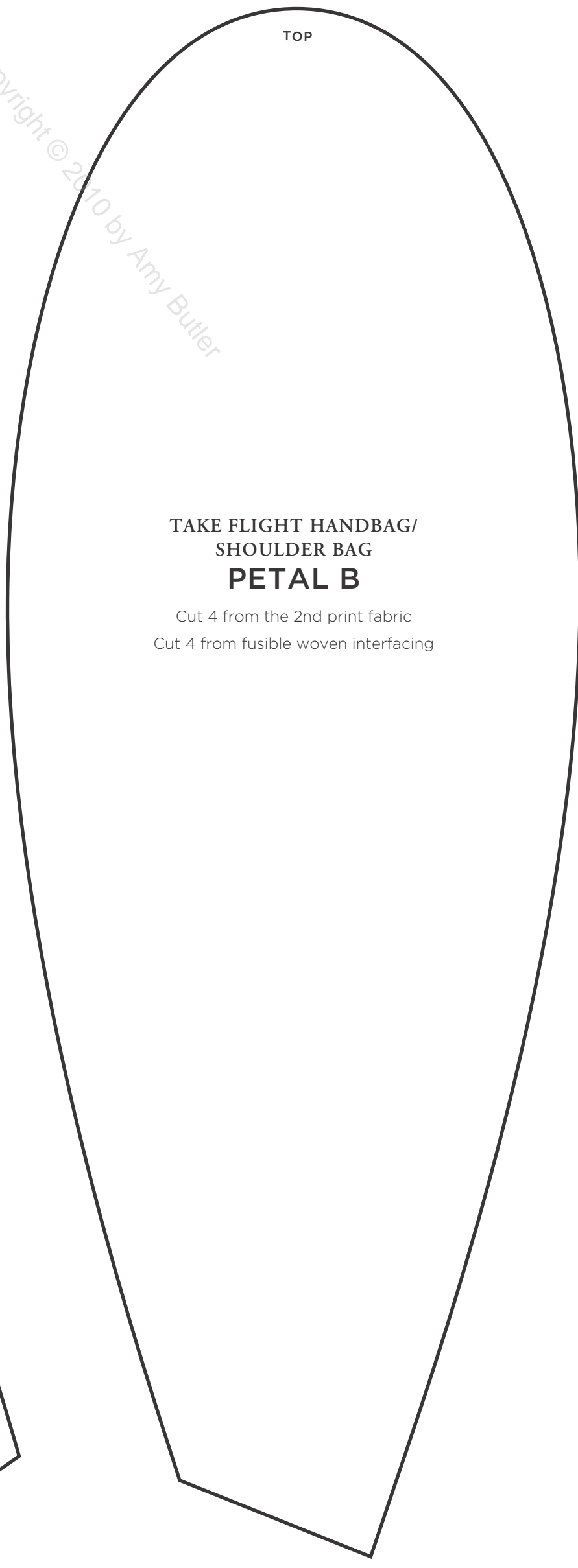
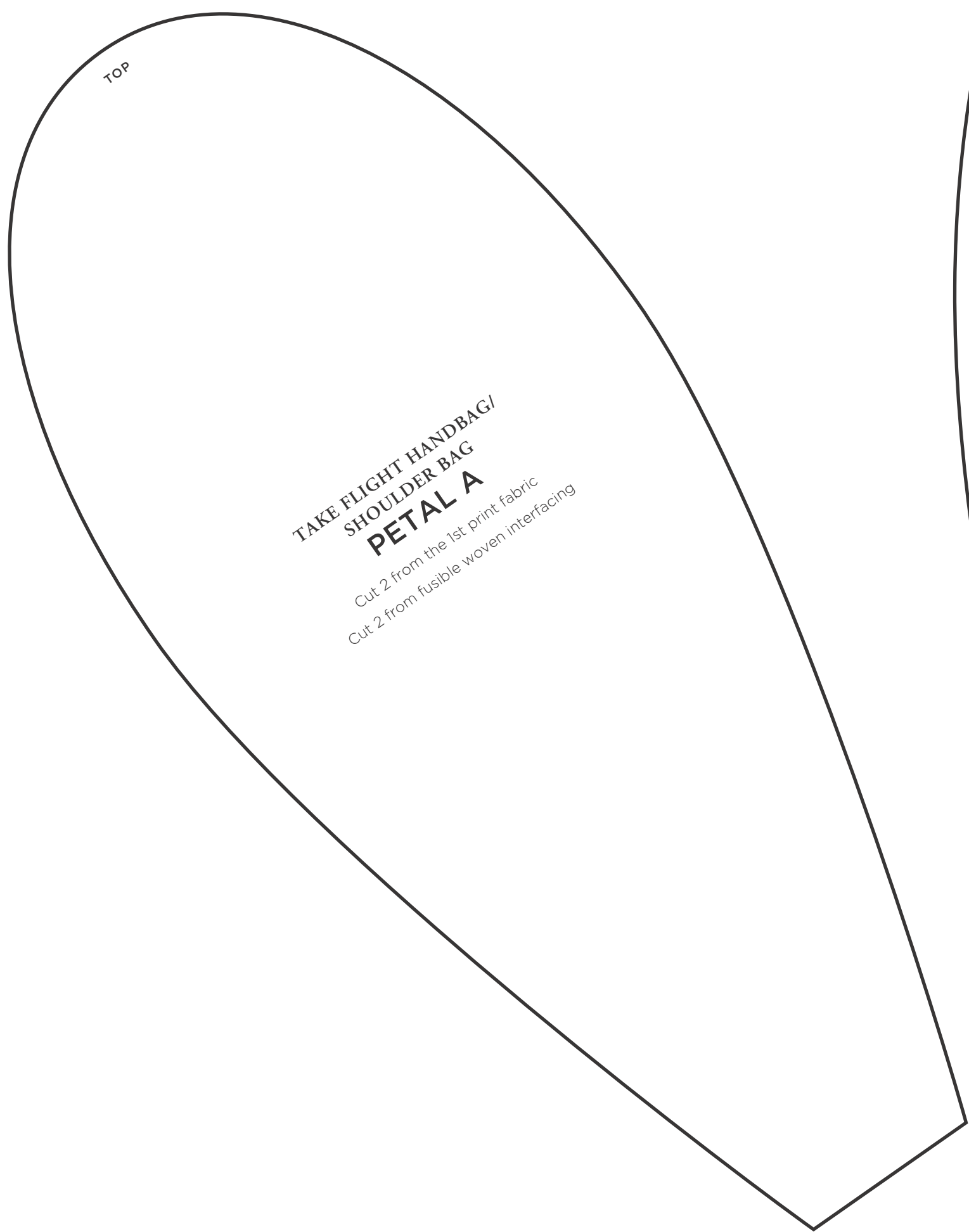
TOP

**TAKE FLIGHT HANDBAG/SHOULDER BAG
MAIN PANEL**
Cut 2 from the 1st solid fabric on the fold
Cut 2 from the coordinating solid exterior fabric on the fold
Cut 2 from the fusible woven interfacing
Cut 2 from the fusible Peltex®
Use the panels you have just cut as full-size pattern pieces

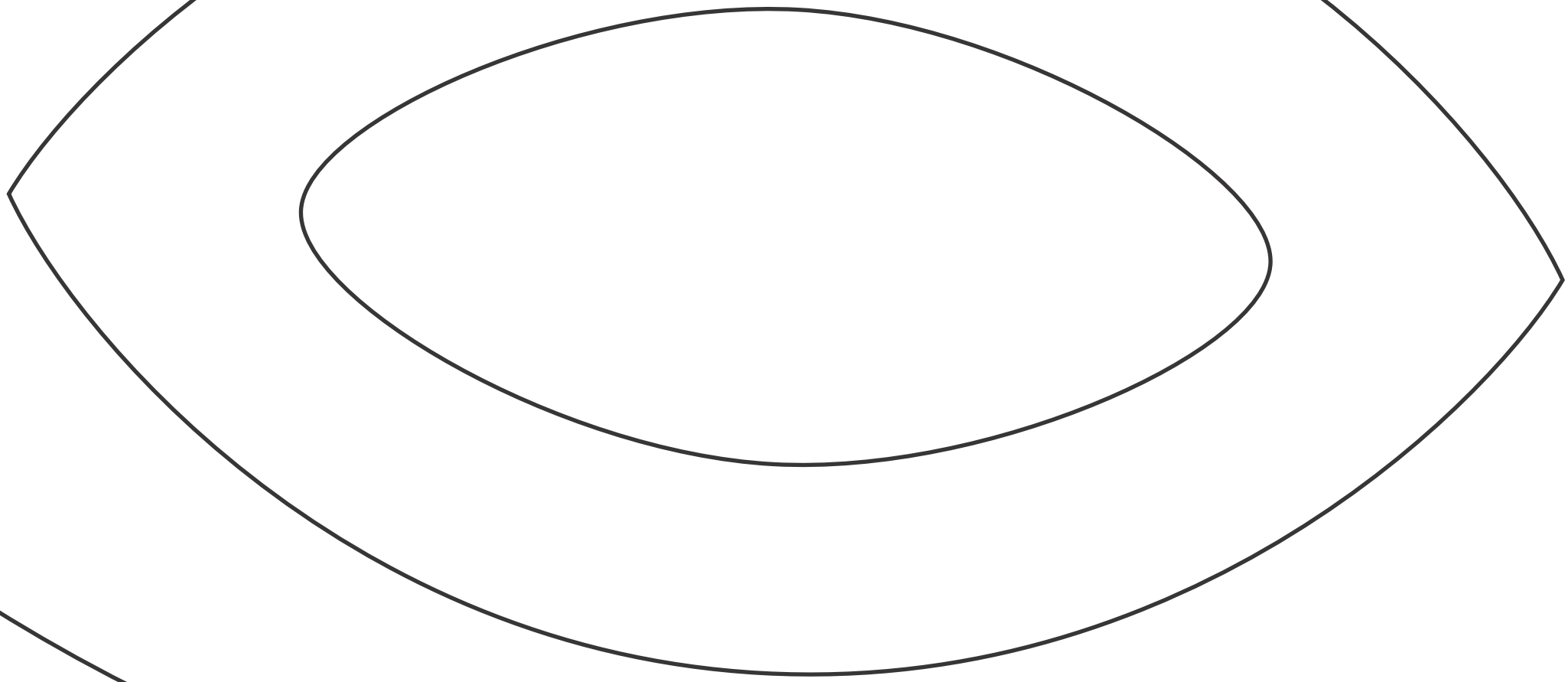
Place this edge on the fold of the fabric



Copyright © 2010 by Amy Butler



MISS MAVEN RUFFLED HANDBAG
PELTEX® HANDLE TEMPLATE
Cut 4 from the double-sided fusible Peltex®



TOP

Fold the pattern piece back at this line for the cutting line for the pocket panel

Copyright © 2010 by Amy Butler

MISS MAVEN RUFFLED HANDBAG
MAIN/POCKET PANEL

FOR MAIN PANEL
(For large bag, use the entire pattern piece. For small bag, fold the pattern piece back at the side and bottom dashed lines.)

Cut 2 from the exterior fabric on the fold

Cut 2 from the lining fabric on the fold

Use the panels you have just cut as full-size pattern pieces

Cut 2 from the fusible woven interfacing

Cut 2 from the fusible fleece

FOR POCKET PANEL
(Fold the pattern piece back at the top dashed line)

Cut 2 from the lining fabric on the fold

Use the panels you have just cut as full-size pattern pieces

Cut 1 from the fusible woven interfacing

Fold the pattern piece back at this line for the cutting line for the small bag

Cutting line for the large bag

Place this edge on the fold of the fabric

Fold the pattern piece back at this line for the cutting line for the small bag

Large bag

